



# METRO Bronze Line Project Update

Metropolitan Council Committee of the Whole

December 10, 2025

# Today's Topics

- Project overview
- Project scope
- Public outreach plan
- Project delivery approach
- Q&A

# Project Overview

Craig Lamothe (he/him/his) | Project Manager

# Project History



# Who is the Project serving



- 61% BIPOC



- 17% 0-car Households



- 20% Population in poverty



- 11% Population over 65



- 38% Population under 25



- 13% Population with a Disability



- 18% Population with Limited English Proficiency



12

Schools



5

Healthcare  
Facilities

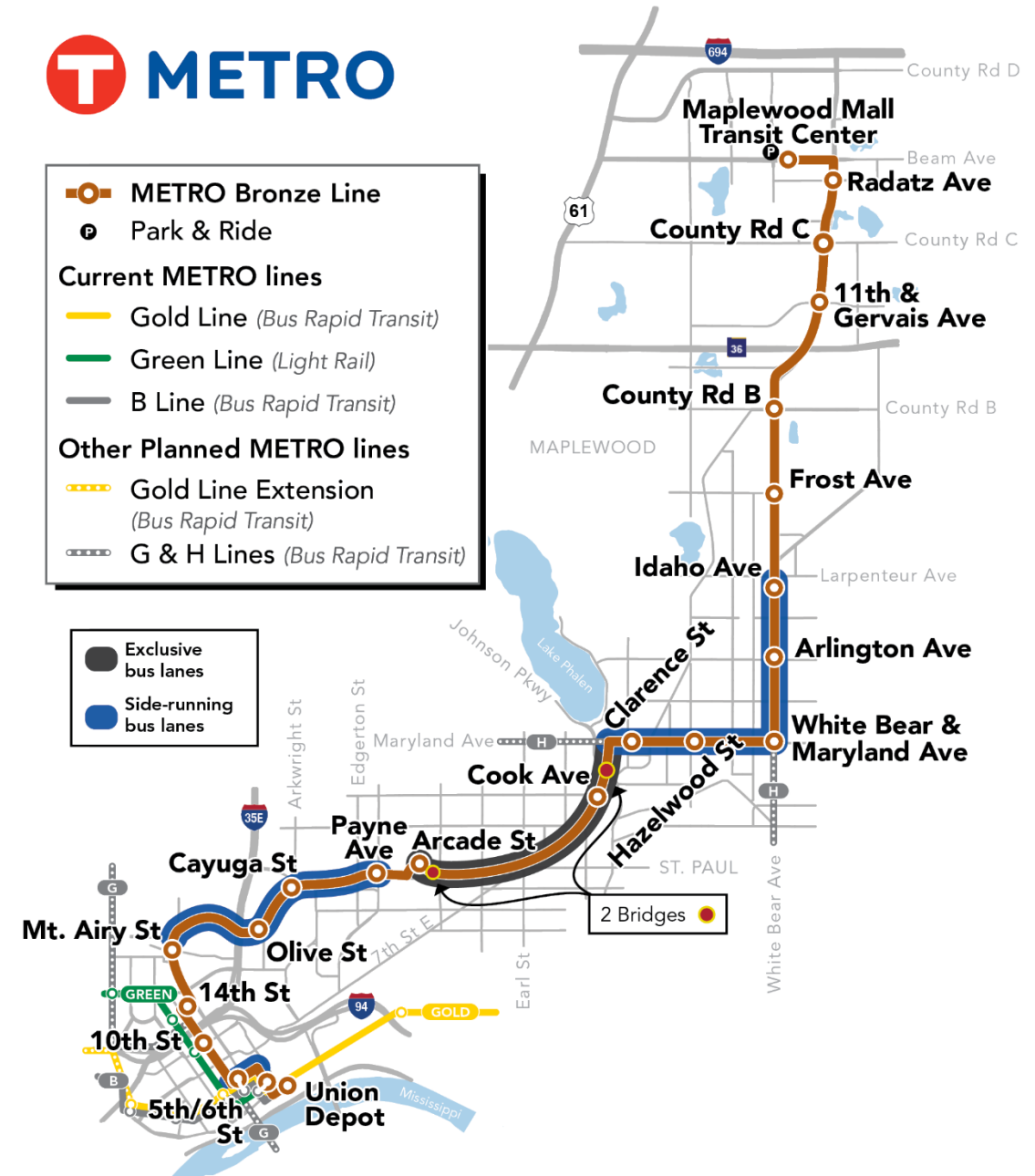


2

Libraries

# Introducing the METRO Bronze Line

- A reimagined and community responsive version of the former Purple Line BRT project
- Will improve transit reliability and enhance safety along key corridors
- 10-mile route between St. Paul's Union Depot and the Maplewood Mall Transit Center
- 22 stations and feature 5 miles of bus lanes and two new bridges



# METRO Light Rail Transit

- Blue Line
- Blue Line Extension  
Project in engineering
- Green Line
- Green Line Extension  
Project under construction; opens 2027

Current Station

Proposed Station

←

Station names indicated with an arrow show the direction of travel at the station.

# METRO Bus Rapid Transit

- Bronze Line  
Project in engineering
- Gold Line
- Gold Line Extension  
Project in engineering; opens 2027
- Orange Line
- Red Line

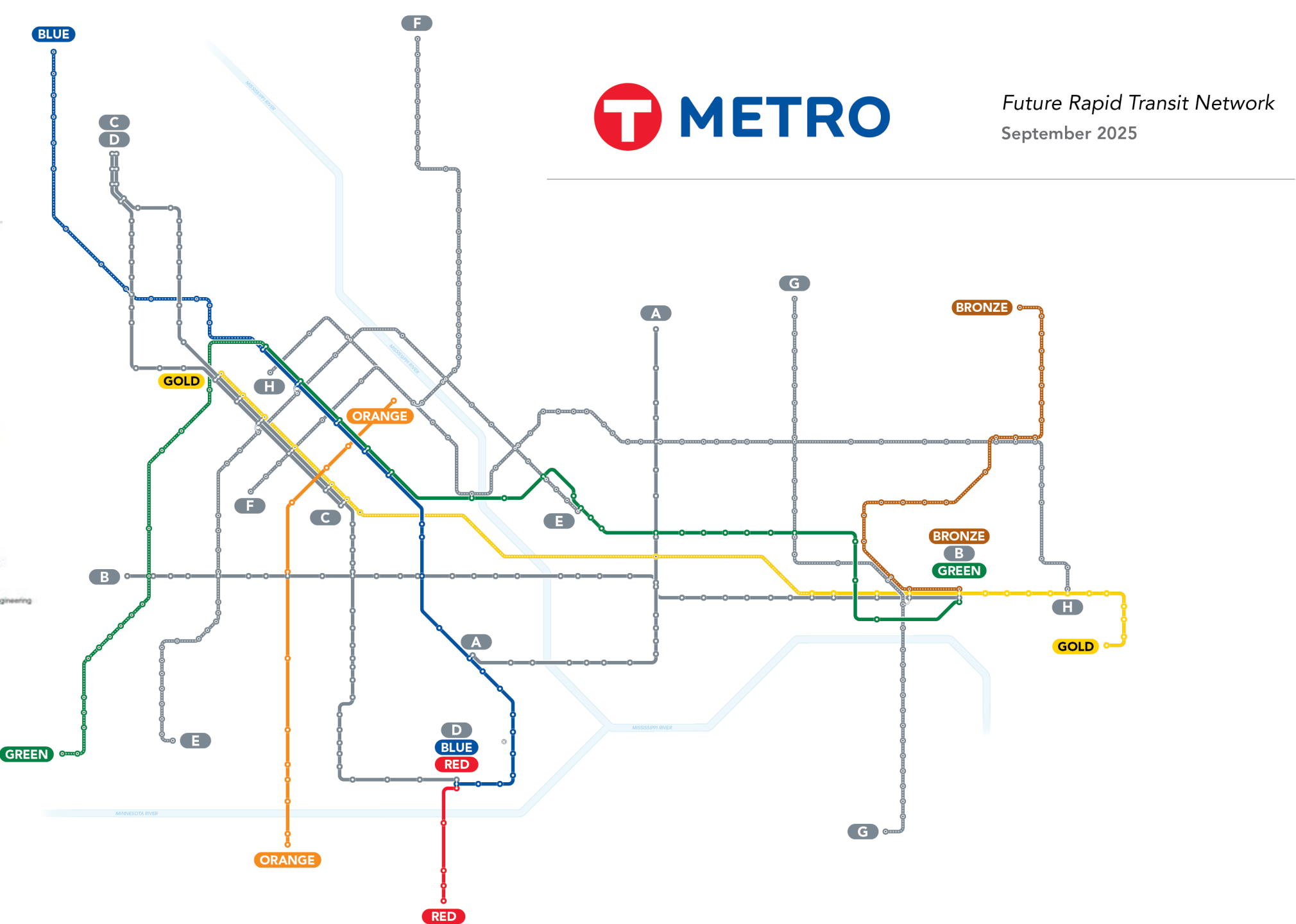
- A Line
- B Line
- C Line
- D Line
- E Line  
Opens 2025
- F Line  
Project in engineering

- G Line  
Project in engineering
- H Line  
Project in planning; stations subject to change

Bus Rapid Transit (BRT) lines offer speed improvements of up to 25% over regular transit routes.

BRT lines named with a color operate primarily on bus-only lanes and freeways with transit advantages.

BRT lines named with a letter operate in mixed traffic with signal priority and other transit advantages like bus-only lanes.



# Project Scope

Morgan Abbott (she/her/hers) | Transit Engineering & Design Manager



# Saint Paul south of Maryland Ave:

- Union Depot Station to Cook Ave. Station: Preliminary Engineering Complete
  - Major design features such as platforms and bridges are set.
- Union Depot Station through 10th St. Station have been or will be completed by other BRT projects



# Pennsylvania Avenue

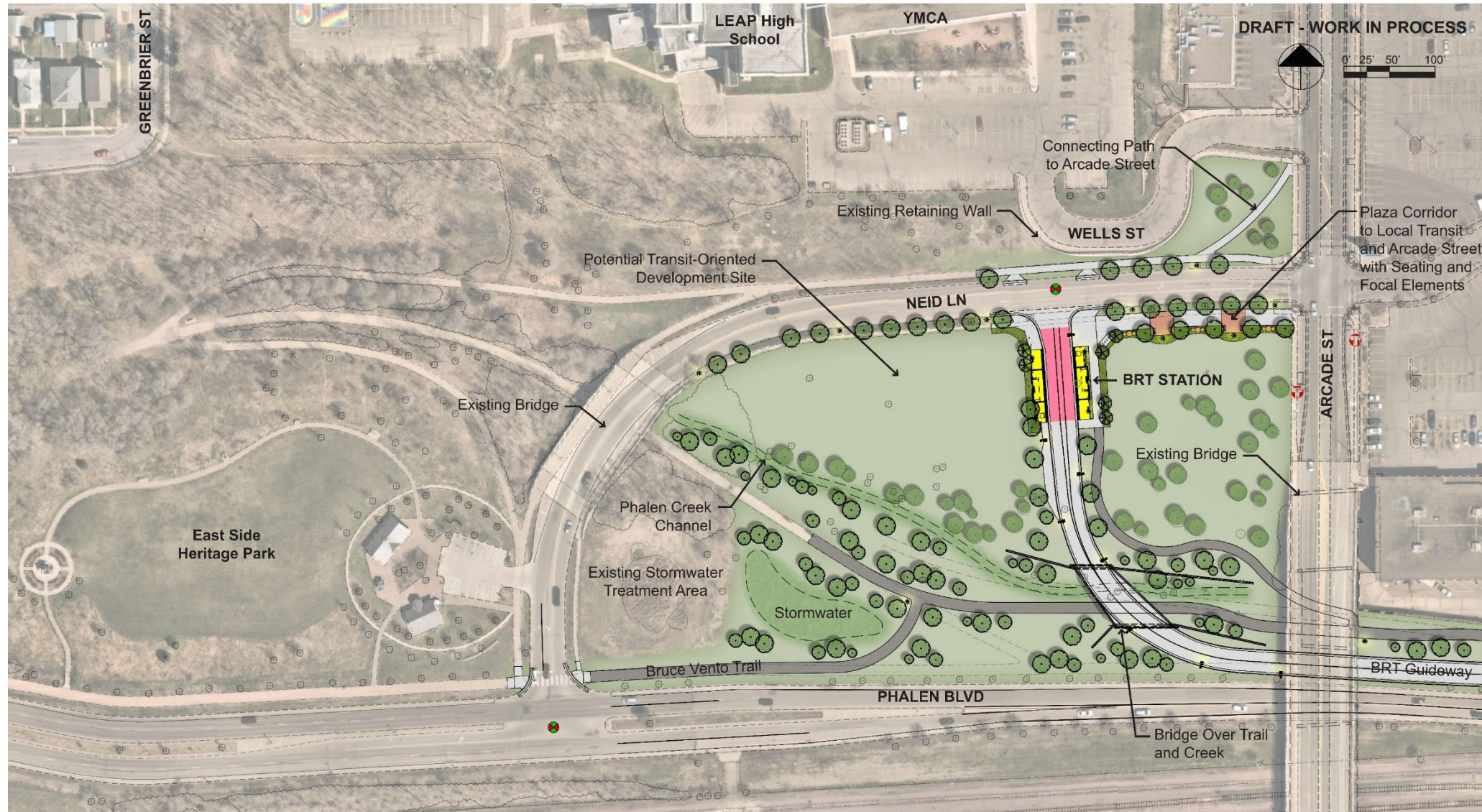
## Project Area



- Currently under study by Ramsey County between I-35E and Rice Street.
- Part of the BRT alignment and will become part of the project to ensure design consistency and corridor operations.
- Includes multimodal improvements and dedicated transit lanes.
- Construction timing will align with corridor BRT delivery schedule.



# Arcade Station Location



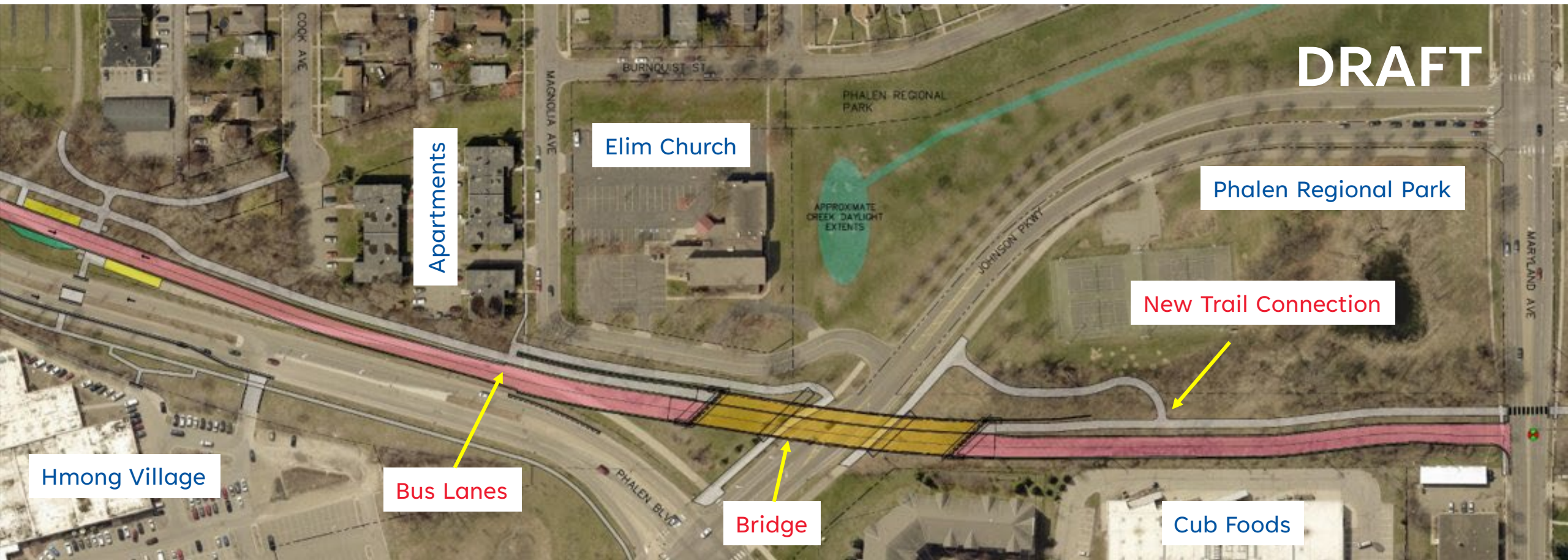


# Artist Rendering of Arcade St Station Area





# BRT & Trail Bridge over Johnson Parkway





# Johnson Parkway Bridge (Artist Rendering 2019)



# Saint Paul on Maryland and White Bear avenues:

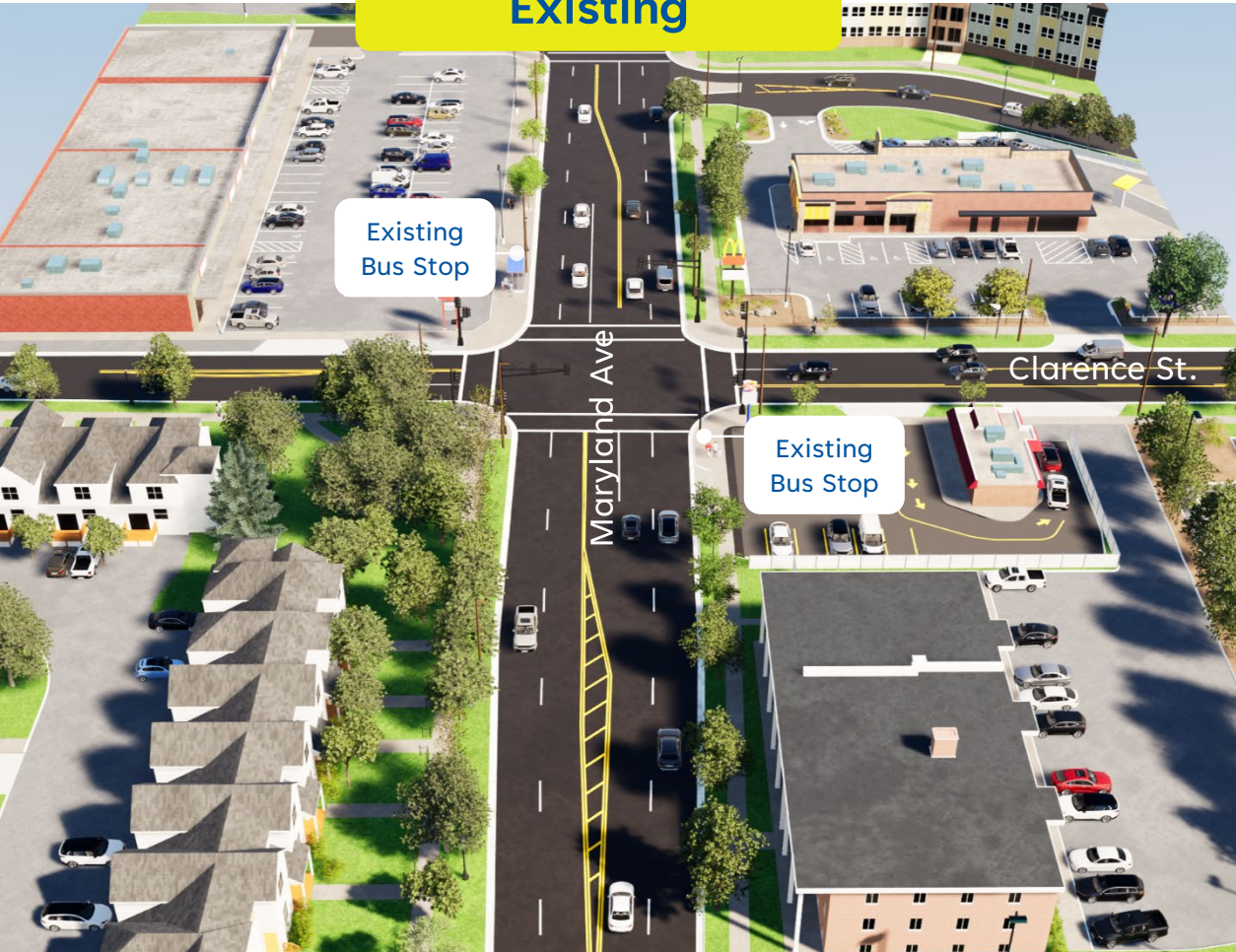
- 5 BRT stations on Maryland and White Bear avenues
  - Clarence, Hazelwood, White Bear & Maryland, Arlington, Idaho
- Side-running bus lanes
  - General traffic to make right-turns onto local streets or into driveways
- Full roadway reconstruction



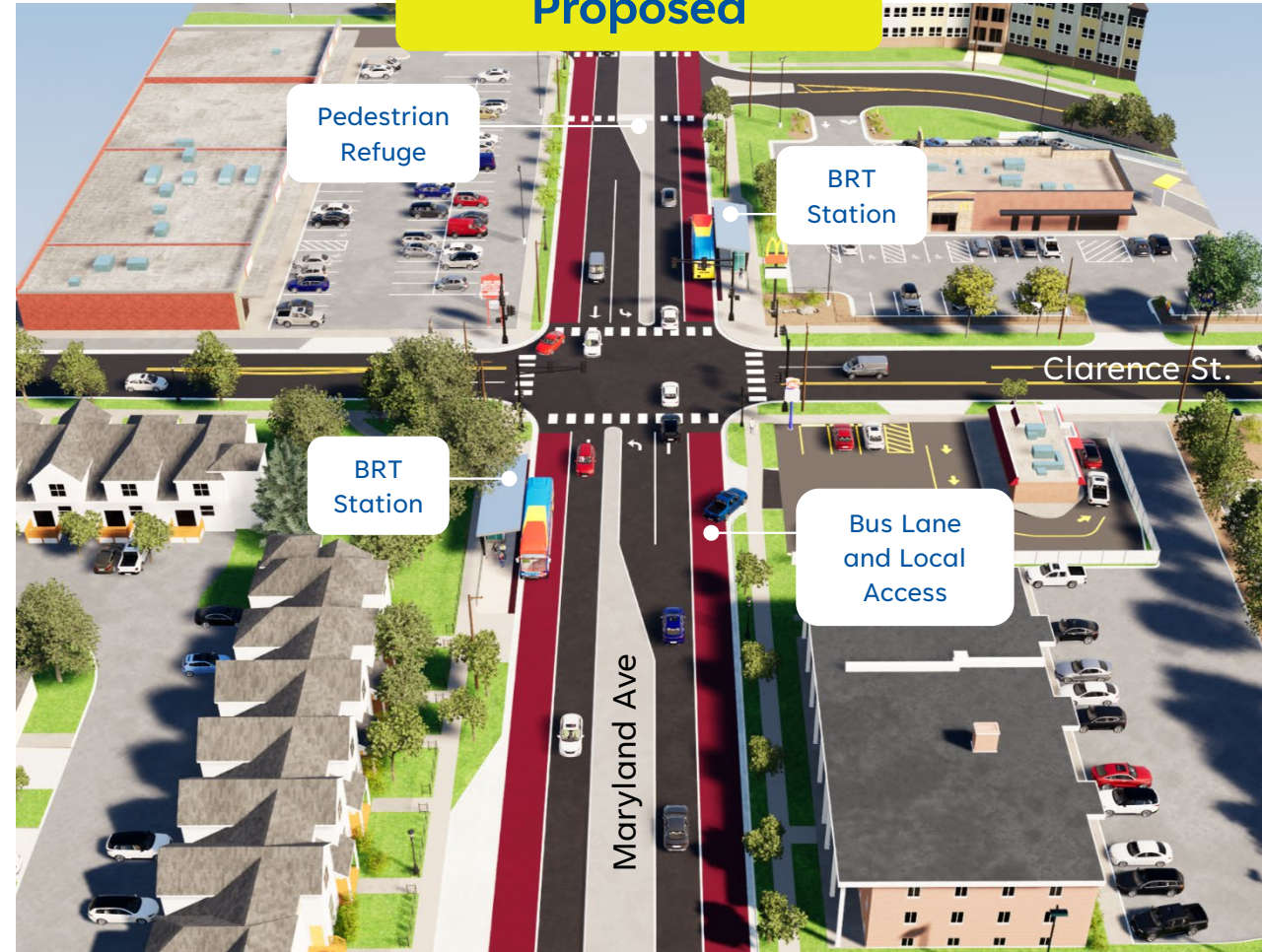


# BRT in Saint Paul (Maryland and White Bear)

Existing



Proposed



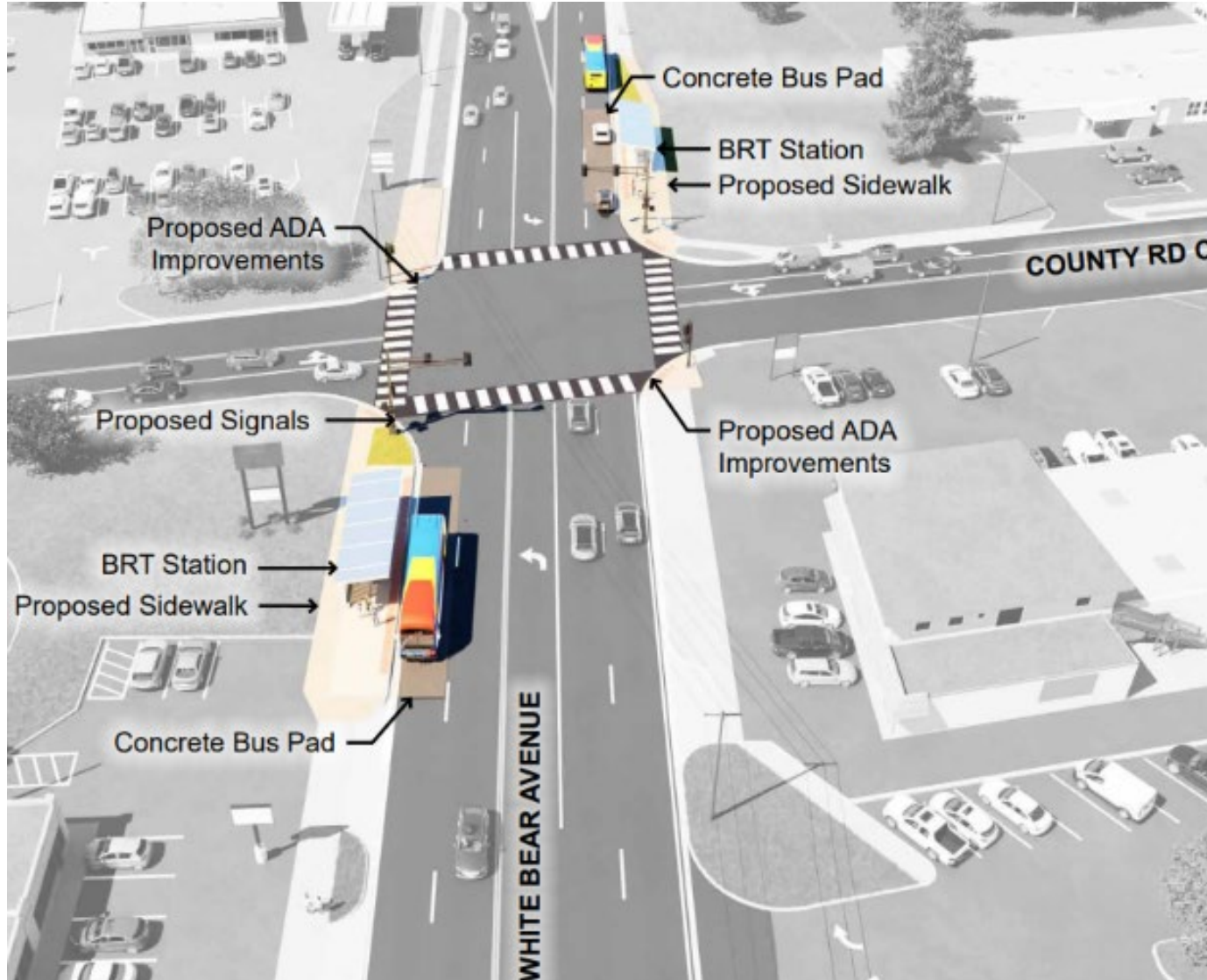


# Maplewood – White Bear Ave north of Larpenteur Ave:

- 6 BRT stations
  - 5 new stations (Frost, County Rd B, 11th/Gervais, County Rd C, Radatz)
  - End-of-the-line station at the Maplewood Mall Transit Center
- Maplewood Mall Transit Center
  - Connection to a new [Metro micro](#) service zone (coming September 2026)
  - Connection to new and improved Route 219 and 223 service (by end of 2027 through [Network Now](#)).



# BRT on White Bear Ave in Maplewood



- Limited right-of-way acquisition to accommodate station platforms
- Improved pedestrian crossings at intersections with stations
- No roadway reconstruction

# Public Outreach and Communications

Liz Jones (she/her/hers) | Community Outreach & Engagement Lead

# 12/2 Media Rebranding Event

- Public announcement of new Bronze Line color
- Remarks by Commissioner Xiong, Chair Hutcheson, Mayor Carter, Mayor Abrams
- Media coverage
  - [KSTP](#)
  - [Pioneer Press](#)
  - [CBS](#)





# Key Messages

- Met Council, Ramsey County and the cities of Maplewood and Saint Paul announced a new METRO BRT project, a reimagined and community responsive version of the former Purple Line Bus Rapid Transit (BRT) project
- The BRT project:
  - Reflects local input, improves transit reliability, and enhances safety along key corridors in Maplewood and Saint Paul
  - Has strong support from project partners, changing to best meet the needs of the community and deliver improved transit in the east metro area
  - Is a BRT line operating along a 10-mile route between Saint Paul's Union Depot and the Maplewood Mall Transit Center. The new route will serve 22 stations and feature 5 miles of bus lanes and two new bridges for fast, reliable service

# Outreach Plan

- Timeframe:
  - Stakeholder/Committee outreach began Sept. 23
  - Broad community outreach began Dec 2.
- Purpose:
  - Message rebrand of project
  - Notify community about upcoming CMC to provide an update on project alignment and scope
  - Meet with public and stakeholders to allow time for questions and understanding

# Outreach Activities & Materials

- Activities:

- Host virtual community meeting
- Attend community events and conduct pop-ups
- Develop & distribute project materials to display or use at libraries, community centers, etc.
- Presentations to stakeholders
- Meetings with businesses

- Materials:

- Project factsheet
- Newsletter
- Social media
- Display board
- Interactive feedback map (virtual)
- Corridor-wide postcards

**METRO**  
Bronze Line

**METRO Bronze Line Project**  
December 2025

### Project Overview

The METRO Bronze Line is a planned bus rapid transit line that will provide faster and more reliable transit service to the cities of Saint Paul and Maplewood and will connect with existing and future light rail and bus rapid transit services of the METRO system, including direct connections to the Green Line, Gold Line, B Line, G Line, and H Line, as well as local and express bus routes. The line will run from Union Depot in downtown Saint Paul to Maplewood Mall Transit Center, generally along Robert Street and Phalen Boulevard south of Maryland Avenue. The line will replace Route 54 along White Bear Avenue and a portion of Maryland Avenue with enhanced service and facilities. The line will increase accessibility to jobs, housing, and services, improving the appeal and competitiveness of the east metro area.

### Project Schedule

The Corridor Management Committee (CMC) is anticipated to make a recommendation to advance the project during its Dec. 11 meeting. Afterward, the Metropolitan Council would seek resolutions of support from Ramsey County and the cities of Maplewood and Saint Paul.

The schedule for the project's design, construction, and opening is under development. More information about the project schedule will be shared once available. Construction is not anticipated before 2028.

2025				2026	
September	October	November	December	January	February
Public Outreach				Resolutions of Support	

English Factsheet  
(front side)

**METRO**  
Bronze Line

**MASHRUUQA KHADKA METRO BRONZE LINE**  
DISEEMBAR 2025

### Isku dubaridka la-hawlgalayaasha mashruuca ayaa keentay qeexidda soo socota:

Gudaha Maplewood, mashruuca waxaa ka mid ah:

- Hagaajinta boosajada dhamaadka wadada ee Maplewood Mall Transit Center
- Meelo kor ka dadadan oo uu rakaabku ku sugo oo istaareex ah oo leh tas-hillaad kala duwan oo ay ku jiraan iftiiminta iyo kor u qaadista bilicda
- Wax ka beddelada munaamta calaamada taraafikada gaadidka
- Hanashada chulka dariiga oo kooban si boos loo siiyo aagaga boosajada
- Hagaajinada isgoysyada boosajada, sida:
  - Taagga dadka lugaynaya iyo calaamada
  - Beddelidda suurtagalka ah ee nalalka taraafiga ee gaabooy
- Basaska waxay adeegsan doonaan seedadka ujeedooyinka guud ee waqooyiga Larperneur Avenue

### Gudaha Saint Paul, mashruuca waxaa ka mid ah:

- Nakhshadda mashruuca waxaa ka mid ah BRT cusub iyo dhabbo buundo oo waxyaabo badan loo isticmaalo oo la dul saaro Johnson Parkway (inta u dhaxaysa Cook Station iyo Maryland Avenue)
- Meelo kor ka dadadan oo uu rakaabku ku sugo oo istaareex ah oo leh tas-hillaad kala duwan oo ay ku jiraan iftiiminta iyo kor u qaadista bilicda
- Basaska waxay mari doonaan seedadka gashaah ee wadooyinka Maryland iyo White Bear ee koonfurta Larperneur Avenue tasoos u oggolaanaysa gaadidka guud inay midig ugu leedaan wadooyinka ama dariigada maxalliga ah
- Nonumamada kale ee Saint Paul waxaa ka mid ah:
  - Seedad u gaar ah baabuurta bidu u leeanaysa iyo meelo u dheer iyo wadooyinka oo cusub
  - Taagga dadka lugaynaya iyo calaamada
- Wax ka beddelada munaamta calaamada taraafikada gaadidka
- Hanashada chulka dariiga si ay boos u siiyo dib-u-dhiska wadada iyo goobaha boosajada

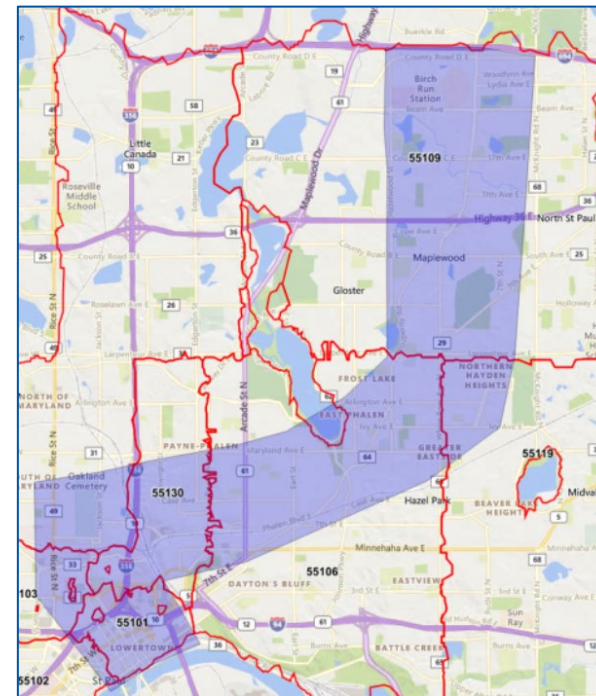
### KU XIRNOW

**Imayl** aad darsayso in shaqaalaha Bronze Line ay yimaadaan kooxdaada xafada, ururka bulshada, meherada, ama dhacada, fadlan la xiriir: [bronze-line-project@metrotransit.org](mailto:bronze-line-project@metrotransit.org)  
**Na soo wac:** 651-402-1955  
**Na soo follow-garee:** @MetroTransitMN

If you need this information in an alternative format or language, contact:

Si necasta esta información en un formato o idioma alternativo, póngase en contacto con:  
Yoo koj xaw xaw cov las no tahay taas las himoob laasas xaw xaw ibi bus neeg pab tahay cov las no rau koj, tix taji:  
Haddi aad dooneysii in aad macluumaadkan ku hesho siyaabo kale ama afaf kale, la xiriir: [bronze-line-project@metrotransit.org](mailto:bronze-line-project@metrotransit.org)

Somali Factsheet  
(back side)



Postcard Mailer Radius

**METRO**  
Bronze Line

**COMMENT CARD**

NAME: \_\_\_\_\_ PHONE: \_\_\_\_\_

E-MAIL: \_\_\_\_\_ ☐ Check the box if you would like to be contacted

COMMENTS/QUESTIONS:

\_\_\_\_\_

\_\_\_\_\_

\_\_\_\_\_

\_\_\_\_\_

\_\_\_\_\_

Please leave this card in the comment box. Your feedback will be shared with project staff and included in the project record. Comments and questions may also be directed to [BronzeLine@metrotransit.org](mailto:BronzeLine@metrotransit.org).

Comment Card

**METRO**  
Bronze Line

**PROJECT UPDATE!**  
The Metropolitan Council, Ramsey County and the cities of Maplewood and Saint Paul announce the METRO Bronze Line bus rapid transit project.

[metrotransit.org/bronze-line-project](https://metrotransit.org/bronze-line-project)



UPCOMING  
**COMMUNITY MEETING**

VIRTUAL MEETING  
**WEDNESDAY, DEC. 10**

Social Media

**METRO**  
Bronze Line

**METRO Bronze Line**

The Metropolitan Council, Ramsey County, and the cities of Maplewood and Saint Paul are excited to announce the METRO Bronze Line, a reimagined version of the former Purple Line bus rapid transit (BRT) project.

The Bronze Line will span about 10 miles, with 22 stations, five miles of bus lanes, and two new bridges. Stations will have near-level platforms, real-time arrival info, lighting, security cameras, and seasonal shelter amenities. BRT vehicles will allow all-door boarding with off-board fare collection. It will operate in mixed traffic in Maplewood and a mix of exclusive lanes and mixed traffic in Saint Paul.

To learn more about the project, share your feedback on an interactive map, and find meeting and pop-up event details:

[metrotransit.org/bronze-line-project](https://metrotransit.org/bronze-line-project)

### STAY CONNECTED!

Attend a virtual community meeting on Dec. 10 to learn more about the trajectory of the METRO Bronze Line and how it will move forward in Saint Paul and Maplewood.

**VIRTUAL MEETING**  
Wednesday, Dec. 10 | Noon – 1:30 p.m.  
Visit the website for the meeting link.

If you are interested in having Bronze Line staff come to your neighborhood groups, community organization, business, or event, please reach out.

**SIGN UP FOR EMAIL UPDATES:**  
[metrotransit.org/bronze-line-project](https://metrotransit.org/bronze-line-project)

Email us: [BronzeLine@metrotransit.org](mailto:BronzeLine@metrotransit.org)  
Follow us: @MetroTransitMN

Postcard





# Display Board Locations

- Maplewood

- Maplewood YMCA
- Ramsey County Library
- Maplewood City Hall
- Cochran Recovery Services
- Emma's Place

- Saint Paul

- Mt. Airy Community Center
- Phalen Recreation Center
- Hayden Heights Recreation Center
- Arlington Hills Community Center
- CLUES Teen Tech Center
- Ramsey County Library - North St. Paul
- St. Paul Public Library - Hayden Heights
- St. Paul Public Library – Dayton's Bluff
- St. Paul Public Library – George Latimer Central
- Iowa Hi-Rise
- Mt. Airy High Rise

# METRO Bronze Line Bus Rapid Transit Overview

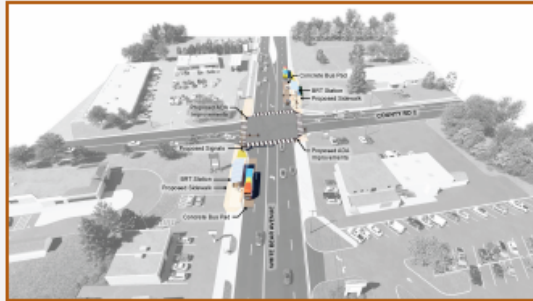
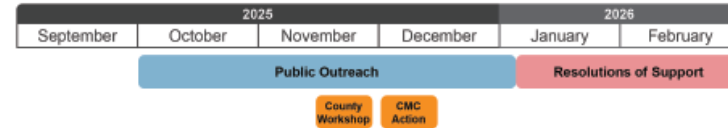


RAMSEY COUNTY

## Project Schedule

The Corridor Management Committee (CMC) is anticipated to make a recommendation to advance the project during its Dec. 11 meeting. Afterward, the Metropolitan Council would seek resolutions of support from Ramsey County and the cities of Maplewood and Saint Paul.

The schedule for the project's design, construction, and opening the new project is under development. More information about the longer-term schedule will be shared once available. Construction is not anticipated before 2028.



White Bear Avenue and County Road C in Maplewood



Maryland Avenue and Clarence Street in Saint Paul

### In Maplewood, the project includes:

- An improved end-of-the-line station at the Maplewood Mall Transit Center
- Comfortable shelters with a variety of amenities including lighting and landscaping enhancements
- Traffic signal transit priority modifications
- Limited right-of-way acquisition to accommodate station platforms
- Improvements at station intersections, such as:
  - » Pedestrian ramps and signals
  - » Potential replacement of older traffic lights.
- Buses will operate in general purpose lanes north of Larpeteur Avenue

### In Saint Paul, the project includes:

- A new BRT and multi-use trail bridge over Johnson Parkway (between Cook Station and Maryland Avenue)
- Comfortable shelters with a variety of amenities including lighting and landscaping enhancements
- Buses will operate in bus lanes along the route, including side-running bus lanes on Maryland and White Bear avenues south of Larpeteur
- Additional improvements include:
  - » Dedicated left-turn lanes and new medians
  - » Pedestrian ramps and signals
- Traffic signal transit priority modifications
- Right of way acquisition to accommodate roadway reconstruction and station platforms

For more information, visit:  
[metrotransit.org/bronze-line-project](https://metrotransit.org/bronze-line-project)



- METRO Bronze Line
- Park & Ride
- Current METRO lines
  - Gold Line (Bus Rapid Transit)
  - Green Line (Light Rail)
  - B Line (Bus Rapid Transit)
- Other Planned METRO lines
  - Gold Line Extension (Bus Rapid Transit)
  - G & H Lines (Bus Rapid Transit)

- Exclusive bus lanes
- Side-running bus lanes



## Stay Connected

Sign up for email updates:  
[metrotransit.org/bronze-line-project](https://metrotransit.org/bronze-line-project)

Call us:  
 651-602-1955

Email us:  
[BronzeLine@metrotransit.org](mailto:BronzeLine@metrotransit.org)

Follow us:  
 @MetroTransitMN



# Recent Meetings & Community Events

Date	Type	Event Name
Sept. 23	Committee Meeting	Payne-Phalen (D5) Community Council
Oct. 4	Tabling/Pop-up	Greater East Side (D2) Community Council Neighborhood Block Party and Annual Elections
Oct. 23	Committee Meeting	Purple People
Nov. 17	Committee Meeting	Dayton's Bluff (D4) Community Council
Nov. 19	Committee Meeting	Greater Eastside (D2) Community Council
Dec. 4	Presentation	Friends of the Parks & Trails
Dec. 4	Tabling/Pop-up	Centromex Supermercado – Saint Paul
Dec. 5	Committee Meeting	Community and Business Advisory Committee
Dec. 5	Tabling/Pop-up	Maplewood Mall Transit Center
Dec. 5	Tabling/Pop-up	Maplewood Mall
Dec. 8	Tabling/Pop-up	Ramsey County Service Center – Saint Paul
Dec. 10	Virtual Open House	Via Teams to share project information, Q&A
Dec. 10	Committee Meeting	Met Council Committee of the Whole

# Upcoming Meetings & Community Events

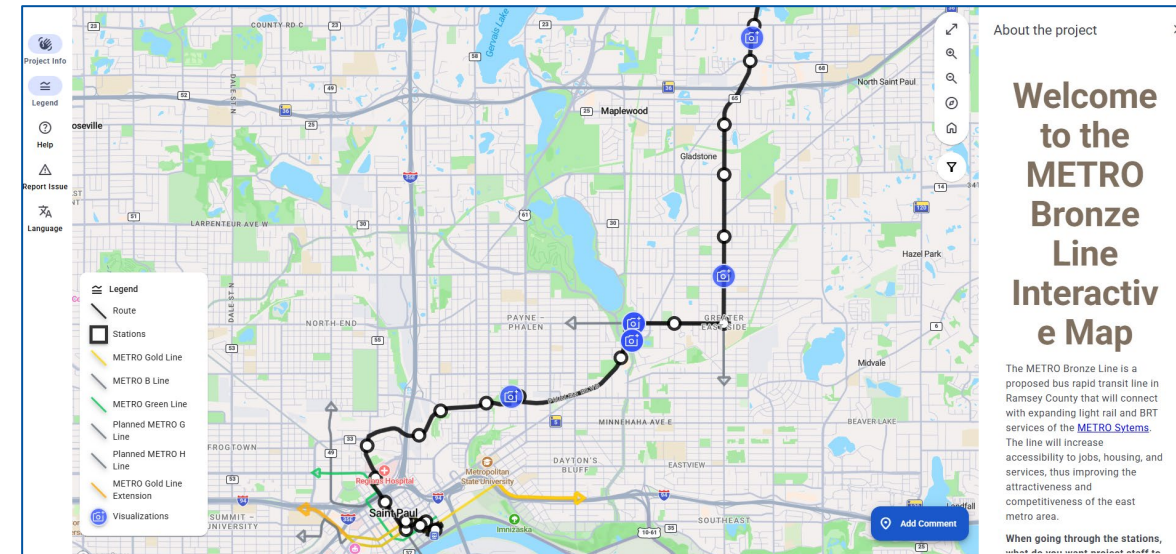
Date	Type	Event name	Time
Dec. 11	Tabling/Pop-up	Sun World Supermarket	3-6p
Dec. 13	Tabling/Pop-up	European Christmas Market	5-7p
Dec. 15	Tabling/Pop-up	Ramsey County Services – Maplewood	10a-1p
Dec. 15	Committee Meeting	Saint Paul Planning Commission's Transportation Committee	4:30p
Dec. 18	Tabling/Pop-up	Hmong Village	12-3p
Jan. 7	Committee Meeting	Transportation Accessibility Advisory Committee	12:30p

# Leave a comment and/or question

- Feedback will be shared with project staff and included in the project record
- Comments and questions can be directed to the project team by email: [BronzeLine@metrotransit.org](mailto:BronzeLine@metrotransit.org)
- To leave a comment/question online, visit: [surveymonkey.com/r/BronzeLine](https://surveymonkey.com/r/BronzeLine)
- To leave a comment on our interactive map, visit: [engage.publiccoordinate.com/project/metro-bronze-line](https://engage.publiccoordinate.com/project/metro-bronze-line)



Survey QR Code



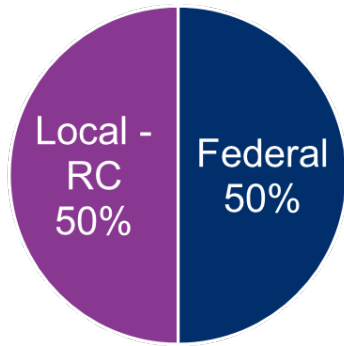
Interactive Map & QR Code

# Project Delivery Approach

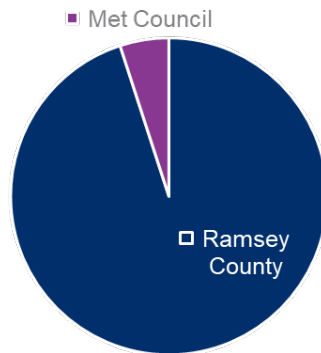
Craig Lamothe (he/him/his) | Project Manager

# Shift in Approach to Capital Financing

Original Funding Approach



New Funding Approach - 100% Local

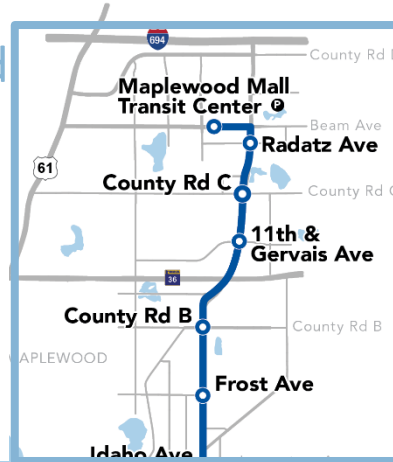


- Benefits:
  - Accelerates delivery
  - Increase design flexibility
  - Simplifies project management and administrative requirements while maintaining local control
  - Eliminates uncertainty of if/when federal funds are received
- Negatives:
  - Forgoes federal funding



# Capital Financing Responsibility Split

Met Council Funded



Ramsey County Funded

- **Ramsey County (\$340 million):**
  - All project costs in Saint Paul
  - Labor and expense costs for Ramsey County staff
  - Some labor and expense costs for select Met Council staff
  - Cost to complete state environmental review process
  - Bus propulsion type could reduce funding commitment
- **Met Council (\$35 million):**
  - All project costs in Maplewood
  - Labor and expense costs for most Met Council staff
  - Bus propulsion type could increase funding commitment



# Contracting Approach

- “Separate but Coordinated” Engineering & Design Phase
  - Council design contract:
    - All stations, intersection improvements in Maplewood, Maplewood Mall Transit Center and Union Depot improvements, two new bridges, and exclusive bus lanes.
  - County design contract:
    - Reconstruction of county roads (Pennsylvania, Maryland, White Bear) plus mill and overlay on Phalen
  - Strategic Communications, Public Outreach & Engagement, and Community Relations contract
    - Procured and managed by County; Daily work overseen by Council
- Single Construction Package
  - Council or County to issue a single construction package encompassing both design packages

# Joint Project Office

- Effective January 1, 2026, County will become the lessor and lessee for the project office space in the County's Metro Square Building.
  - Lease will run through December 31, 2029.
- Effective January 2, 2026, Council will be responsible for the administration of the project office space.
  - Hardware and software for Conference Rooms and Individual Workstations
  - General office supplies (e.g., printing costs, paper, pens, kitchen appliances)

# Communication, Coordination, & Collaboration

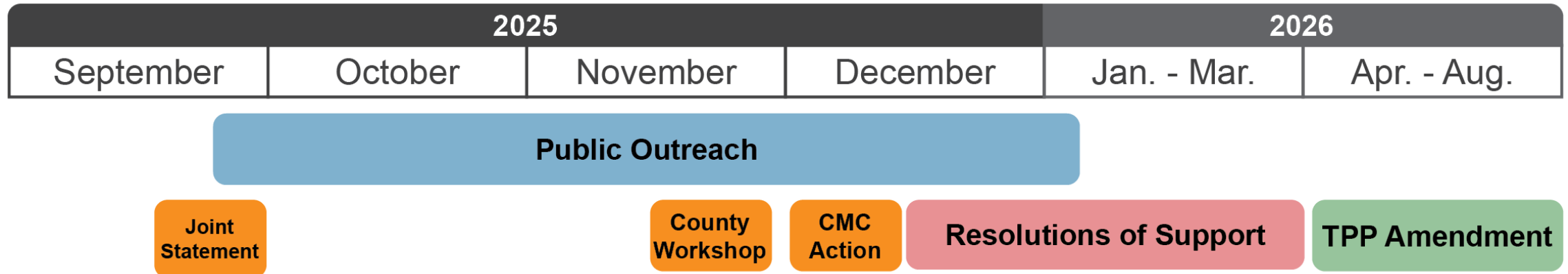
- Project committees, as currently constituted, are ending in December 2025.



- Overall project committee structure, including committee charter and membership, is under evaluation.
  - Focus on distinguishing between effective communication/information sharing vs. meaningful engagement on issues needing input

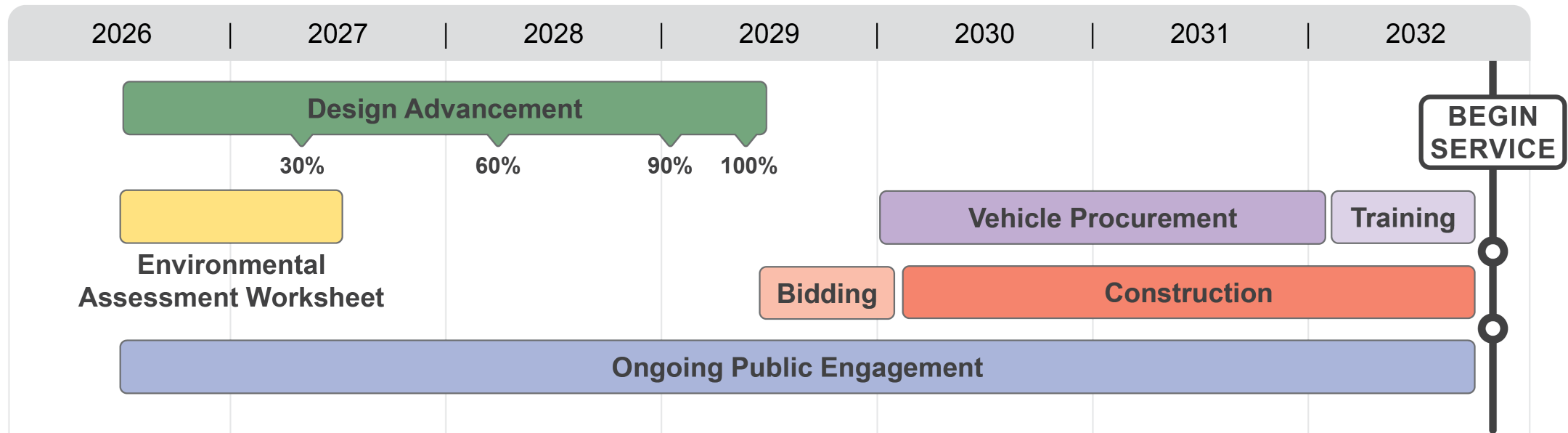
# Near Term Look Ahead

- December 11, 2025
  - Corridor Management Committee recommendation for a revised Locally Preferred Alternative (LPA)
- January – August 2026
  - Council Action: Execute a Funding Agreement with County
  - Council Action: Execute a Contract for Environmental, Engineering & Project Management
  - Council Action: Amend revised LPA into the Transportation Policy Plan



# Longer Term Look Ahead

- New consultant teams onboard by mid-year 2026
- Decision on bus propulsion type in 2028
- Construction staging and maintenance of traffic planning beginning in 2028



## Q&A

# Contact Us:

## Project Senior Leadership Team

### **Craig Lamothe**

Council's Project Manager

[craig.lamothe@metrotransit.org](mailto:craig.lamothe@metrotransit.org)

### **Morgan Abbott**

Transit Engineering & Design Manager

[morgan.abbott@metrotransit.org](mailto:morgan.abbott@metrotransit.org)

### **Stephen Smith**

County's Project Manager

[stephen.smith@co.ramsey.mn.us](mailto:stephen.smith@co.ramsey.mn.us)

### **Eden Haag**

Roadway Engineering & Design Manager

[eden.haag@co.ramsey.mn.us](mailto:eden.haag@co.ramsey.mn.us)

### **Liz Jones**

Project's Communications, Outreach & Engagement, and Community Relations Manager

[elizabeth.jones@metrotransit.org](mailto:elizabeth.jones@metrotransit.org)

# Stay connected

Visit *metrotransit.org/Bronze-Line-Project* to sign-up for email updates or connect with project staff.



**Sign up for email updates:**  
[metrotransit.org/bronze-line-project](https://metrotransit.org/bronze-line-project)



**Call us:**  
612-606-1955



**Email us:**  
[BronzeLine@metrotransit.org](mailto:BronzeLine@metrotransit.org)



**Follow us:**  
[@MetroTransitMN](https://twitter.com/MetroTransitMN)

For project questions or to invite us to an event, contact:

Bronze Line Project Office  
[BronzeLine@metrotransit.org](mailto:BronzeLine@metrotransit.org)  
651-602-1955



**Thank You!**