

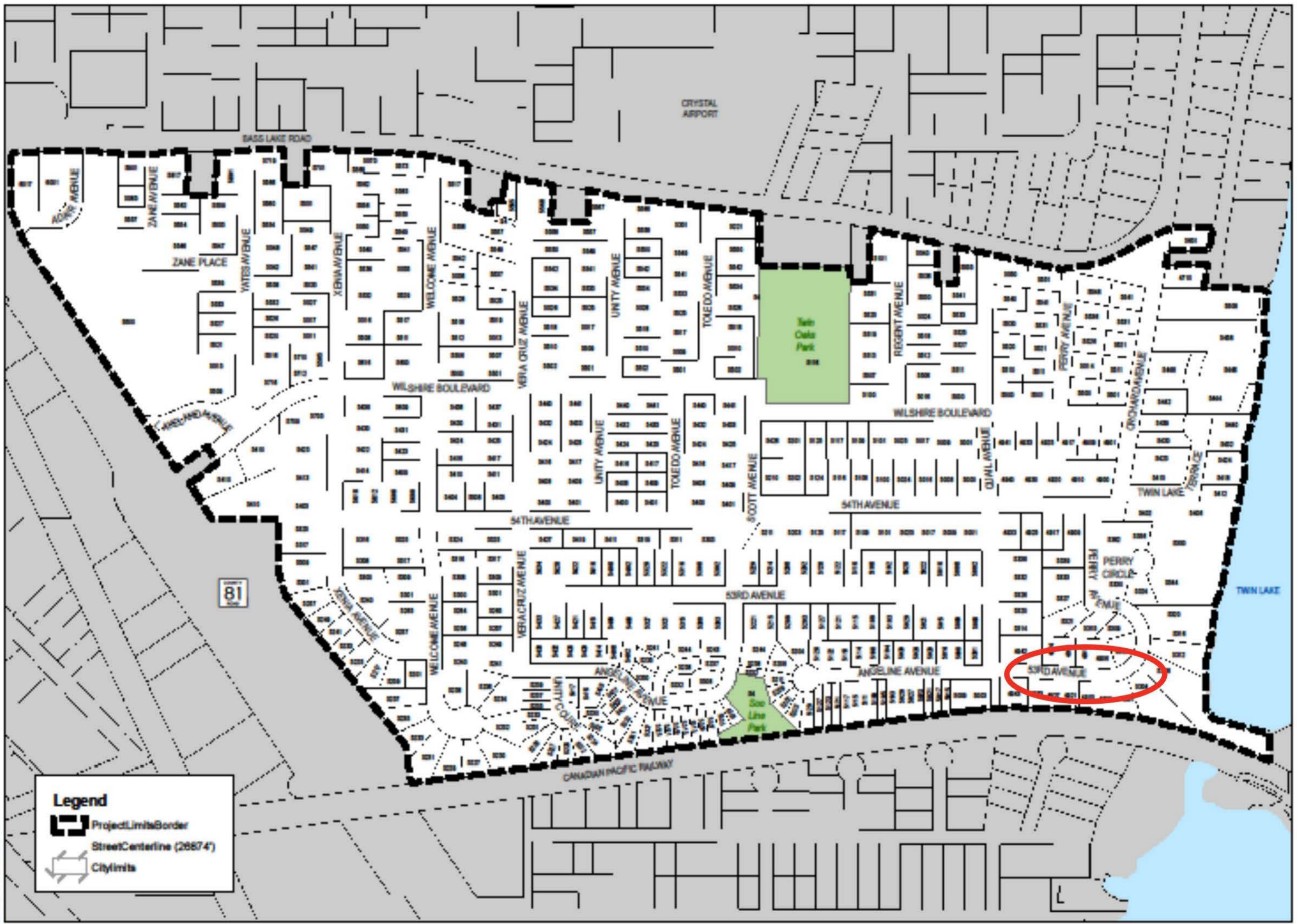
Business Item 2015-263

Authorization to Negotiate and Execute
Cooperative Agreement with the City of
Crystal for Inclusion of 1-BC-453 Force
Main Improvements In Street
Reconstruction Project

Scott Dentz, Interceptor Engineering Manager

Environment Committee: October 27, 2015



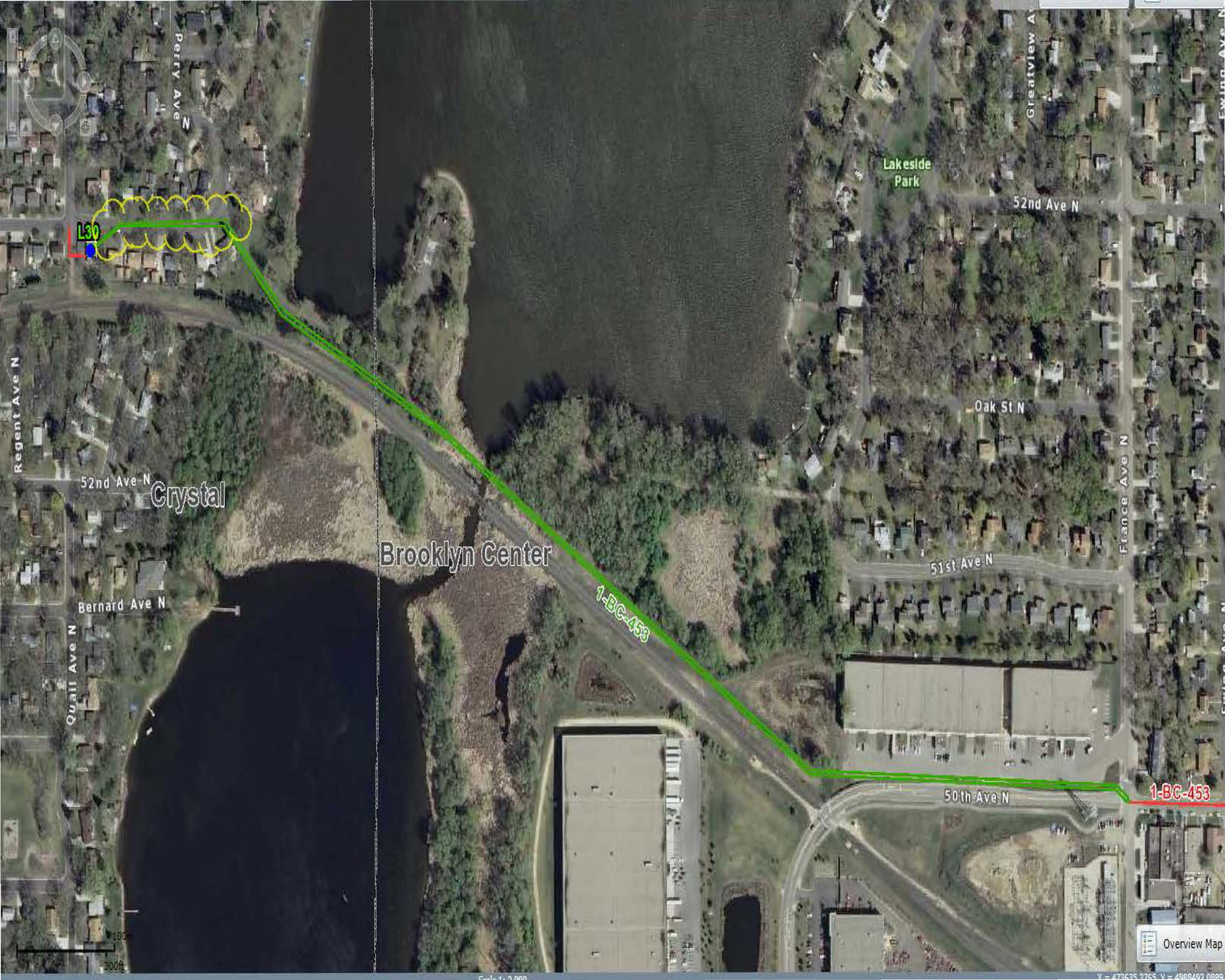


PHASE 15 LOCATION MAP



FILE NO.
CRYST133036

FIGURE 1



L30

Crystal

Brooklyn Center

1-BC-453

1-BC-453

100

300ft

Scale: 1:2,000

Overview Map

X = 472635.3765 Y = 4980492.0890

Quail Ave N

Perry Ave N

53rd Ave N Crystal

L30

