

# Committee Report

Community Development Committee



**Committee Meeting Date:** February 17, 2026

**For the Metropolitan Council:** February 25, 2026

## Business Item: 2026-29

Rice Creek North Regional Trail Long-Range Plan, Anoka County

### Proposed action

That the Metropolitan Council approve Anoka County's Rice Creek North Regional Trail Long-Range Plan.

### Summary of Community Development Committee's Discussion/Questions

Zoey Mauck, Met Council Regional Trail Planner, presented the staff report for the Rice Creek North Regional Trail Long-Range Plan to the Community Development Committee on February 17, 2026.

Councilmember Lindstrom shared that when he was first appointed, the City of Circle Pines brought up completing the missing one-mile segment of Rice Creek North Regional Trail as a top priority. Lindstrom added that this trail is the second most heavily used trail in Anoka County, so he looks forward to seeing the completed trail come to fruition soon.

Chair Lilligren asked for clarification on the archaeological remains found on park property. Mauck responded that the remains were not discovered as part of this project, but that there is documentation from the 1970s indicating that a skeleton was found in this area. Therefore, it is considered a grave site and should be avoided for development.

Motion by Councilmember Lindstrom, seconded by Councilmember Morales. Motion carried.



# Committee Report

Metropolitan Parks and Open Space Commission



Committee meeting date: February 5, 2026

For the Metropolitan Council: February 25, 2026

## Business Item: 2026-29

Rice Creek North Regional Trail Long-Range Plan, Anoka County

### Proposed action

That the Metropolitan Council approve Anoka County's Rice Creek North Regional Trail Long-Range Plan.

### Summary of Metropolitan Parks and Open Space Commission discussion/questions

Zoey Mauck, Met Council Regional Trail Planner, presented the staff analysis for the Rice Creek North Regional Trail Long-Range Plan to the Metropolitan Parks and Open Space Commission on February 5, 2026. Karen Blaska from Anoka County was present to answer questions.

Commissioner Suerig asked what was found during the archaeological investigation that led to the planned portion of the trail being rerouted. Blaska responded that there is documentation from the 1970s indicating that a skeleton was found in this area, so it is considered a grave site.

Commissioner Johnson asked about the implementation status for the new segment of the project. Blaska noted that Anoka County does not have funding for the project currently, but once funding is in place, the County will move the project forward quickly. They do have some design work completed. Chair Yarusso added that an approved long-range plan is required before any development occurs.

Chair Yarusso requested clarification on the status of the "existing" segments of the trail on the map, wondering if they were already built or part of an approved plan. Blaska noted that both are true. These segments are fully developed and open to the public. She also mentioned that this long-range plan is primarily focused on the missing segment of the alignment.

Chair Yarusso mentioned that there are some well-loved unpaved trails along the northern third of Bunker Hills Golf Course and wondered if any of these trails would be paved as part of this plan. Blaska responded that these trails will be maintained as is and that changes to this section are not part of this plan.

Chair Yarusso noted that some parts of the trail end at schools in the County. He asked whether any new trailhead facilities would be added at these points. Blaska responded that these are just trail connections, and formal trailheads will not be developed.

Commissioner Dillenburg asked if the estimated \$20,000 cost for operations applied to just the new segment or to the whole trail corridor. Blaska clarified that this estimate is just for the new segment.

Motion by Commissioner Dillenburg, seconded by Commissioner Suerig. Motion carried.

# Business Item

Metropolitan Parks and Open Space Commission



**Metropolitan Parks and Open Space Commission:** February 5, 2026

**Community Development Committee:** February 17, 2026

**Metropolitan Council:** February 25, 2026

## Business Item: 2026-29

Rice Creek North Regional Trail Long-Range Plan, Anoka County

<b>District(s), member(s):</b>	District E, Chris Suerig District F, Cecily Harris  District 10, Peter Lindstrom District 11, Gail Cederberg
<b>Policy/Legal Reference:</b>	Minnesota Statutes § 473.313; <i>2040 Regional Parks Policy Plan</i> : Chapter 5, Planning Strategy 1
<b>Staff prepared/Presented:</b>	Zoey Mauck, Senior Planner, 651-602-1398
<b>Division/Department:</b>	Community Development / Regional Planning

### Proposed action

That the Metropolitan Council approve Anoka County's Rice Creek North Regional Trail Long-Range Plan.

### Background

Anoka County's Rice Creek North Regional Trail is located in the northern part of the Regional Parks and Trails System in the southeastern portion of Anoka County (Figure 1). In full, Rice Creek North Regional Trail spans 14 miles along Rice Creek from Lino Lakes to the Mississippi River in both Ramsey and Anoka Counties. However, this plan refers specifically to Anoka County's portion of the trail which spans eight miles across the communities of Blaine, Circle Pines and Lino Lakes. This portion of the trail connects to three additional regional trails: East Anoka County Regional Trail, Bunker Hills-Chain of Lakes Regional Trail, and the Rice Creek Regional Trail System in Ramsey County. Ramsey County's portion of Rice Creek North Regional Trail ultimately connects with southern Anoka County's Rice Creek West Regional Trail. This trail travels west to the Mississippi River, creating a continuous trail connection along Rice Creek.

The original concept for Anoka County's Rice Creek North Regional Trail was developed in the early 1970s, and it has been continually identified in Anoka County Parks Department's planning documents since that time. The trail's first long-range plan was developed in 1980, and since then, approximately seven miles of the trail have been constructed, leaving one mile remaining. This remaining mile is located between Golden Lake Elementary and Baldwin Park in the City of Circle Pines. The trail is an important amenity in the region as it provides both local and regional connections along the 28-mile, scenic Rice Creek.

Since the original long-range plan was adopted back in the 1980s, the new long-range plan is proposed to ensure an accurate and future-looking vision for the trail moving forward. While this long-range plan is focused heavily on the remaining one-mile segment, it also reaffirms the existing trail route and identifies issues and opportunities that should be addressed along the length of the entire trail corridor.

## Rationale

As described in the Analysis, the Rice Creek North Regional Trail Long-Range Plan is consistent with the requirements of the *2040 Regional Parks Policy Plan* including Chapter 5, Planning Policy Strategy 1.

## Thrive lens analysis

The Rice Creek North Regional Trail Long-Range Plan advances the *Thrive* outcome of Livability by increasing access to nature and outdoor recreation, which enhances quality of life in the region.

## Funding

There are no anticipated costs for trail easements or joint powers agreements (JPAs) between public entities, and there are no parcels needed for acquisition to complete Rice Creek North Regional Trail.

The estimated development cost to complete Rice Creek North Regional Trail is \$7.7 million. This cost includes site analysis, survey, and studies for proper design, as well as the physical construction of the trail.

Estimated annual operating costs for the trail are approximately \$20,000. Anoka County supports the regional parks system through visitor fees (daily and annual park pass sales, pavilion rentals, and programming fees) as well as through the parks operating budget. Additional funding is provided through the Regional Park Operations and Maintenance Grant Program.



## Analysis

Planning Strategy 1 of the *2040 Regional Parks Policy Plan* requires that long-range plans for regional linking trails address 13 items: boundaries, acquisition costs, demand forecast, development concept, conflicts, public services, operations, partner engagement, public engagement and participation, equity analysis, public awareness, accessibility, and Mississippi River Corridor Critical Area. The following summary analyzes the long-range plan against these requirements.

### **Boundaries**

The Rice Creek North Regional Trail corridor is an eight-mile north to south regional trail in southeastern Anoka County (Figure 1). The alignment generally follows the Rice Creek corridor, starting at the southeastern border of Blaine and northern border of Ramsey County and continues northeast into Circle Pines and Lino Lakes by way of East Anoka County Regional Trail, Golden Lake, Baldwin Lake, Rice Creek Chain of Lakes Park Reserve, Rice Lake, Bunker Hills-Chain of Lakes Regional Trail, and Marshan Lake. It terminates at Lino Lakes Rookery Activity Center, just west of George Watch Lake. The one-mile portion of the trail that is not yet completed is located in the southwest portion of the trail alignment. It starts at Golden Lake Elementary School and continues northeast, connecting to the existing portion of the trail just south of Baldwin Park. (Figures 2 and 3)

The trail will provide connections to the existing Rice Creek Chain of Lakes Park Reserve, Rice Creek North Regional Trail in Ramsey County, East Anoka County Regional Trail, and Bunker Hills-Chain of Lakes Regional Trail. Just south of the southernmost trail limits, the Lexington Parkway Regional Trail Search Corridor connects to Ramsey County's portion of Rice Creek North Regional Trail.

### **Acquisition Costs**

As the majority of the existing and proposed Rice Creek North Regional Trail is within land already designated as Anoka County regional park or regional trail corridor land, there are no anticipated costs for trail easements or joint powers agreements (JPAs) between public entities, and there are no parcels needed for acquisition.

### **Demand Forecast**

According to the Metropolitan Council, Anoka County's population in 2020 was 363,877 residents. This figure is forecasted to grow by nearly 80,000 residents by 2050 (more than 18%) to 443,570. As the county's population continues to grow, so will demand for trails for both recreation and transportation purposes.

The latest visitor estimate for the existing trail in 2024 was more than 125,000 visitors. Based on the projected population growth of 18%, visitation is expected to grow significantly. Once fully completed, Rice Creek North Regional Trail should see close to 200,000 visitors annually, if not more, since the complete trail will make the full creek corridor more accessible to visitors.

In addition to population growth, the rise in outdoor activity that began in 2016 and accelerated during the COVID-19 pandemic is showing few signs of stopping. While diverse ethnic/racial group participation is growing at a slower rate than the overall rate (2024 Outdoor Participation Trends Report), growth at any rate shows support for the addition and improvement of outdoor recreation amenities such as the Rice Creek North Regional Trail.

### **Development Concept**

Rice Creek North Regional Trail will provide an eight mile, 8- to 10-foot wide off-road hard surface trail that connects both local and regional destinations in the community. The trail links the Cities of Blaine, Circle Pines, and Lino Lakes, and connects to East Anoka County Regional Trail and Bunker Hills-Chain of Lakes Regional Trail as well as the Ramsey County portion of Rice Creek North Regional Trail.

Locally, the trail provides a direct connection to Golden Lake and Rice Lake Elementary Schools, the City of Lino Lakes Rookery Activity Center and City Hall, Rice Creek Chain of Lakes Park



Reserve, as well as numerous city trails and residential areas within the community.

Most of the trail is off road, with only 1,000 feet being proposed on a residential road and an existing  $\frac{3}{4}$  mile of trail that is adjacent to Birch Street but separated by a curb and 5- to 10-foot vegetated turf buffer. The off-road trail, which generally follows Rice Creek, provides users with many opportunities for scenic vistas, wildlife viewing, and enjoying nature. Drinking water and restrooms are located at Baldwin Park in Circle Pines and at the Lino Lakes Rookery Activity Center.

The long-range plan breaks down the full trail into four segments, highlighted below. While the maps of each segment in the appendix (Figures 4-7) are labeled “Exhibits”, this review will refer to each portion as a “segment”.

#### *Segment A - (Figure 4)*

The southwest portion of Rice Creek North Regional Trail starts at the intersection of County Road 1 and CSAH 17 and generally heads northeast to Golden Lake Elementary School (Figure 4). Ramsey County’s portion of the trail travels south from this same intersection. This portion of the trail is an eight-foot-wide paved trail on the north side of the creek that connects to East Anoka County Regional Trail and several local trails for access to the surrounding residential area and to local city parks. This segment of paved trail was originally constructed in the 1980s and was repaved in 2016. The long-range plan calls for widening the trail width to 10 feet to meet the County’s regional trail standards.

#### *Segment B - (Figure 5)*

The next segment to the northeast is the proposed alignment of the new trail from the existing trail terminus at Golden Lake Elementary and School Street. The trail is proposed to continue north on the east side of School Street along the school’s property. The County explored routing the trail through park property south and east of the school; however, during the site investigation stage, the county learned that this area is rich in archaeological and cultural resources, so the area was avoided and the school property was selected. The County has had discussions with the School and School District about the use of this property for the trail, and acknowledges that some form of agreement will need to be made with the School District prior to the construction of this portion of trail.

The administrative and management boundary through this area would be 14 feet wide (7 feet on both sides from the centerline of the trail). Management of the trail is expected to be shared between the County and the School District.

At the north edge of the school property, the trail heads east as an on-street trail for approximately 1,000 feet before connecting to an existing trail northeast of the school. The on-street trail is proposed to be signed and designated as a bike route. This segment is proposed to have a 5- to 8-foot administrative and management boundary on each side of the road. The County will administer and manage the bike route. An agreement is expected to be in place before the on-street route is established.

From there, the proposed trail segment continues northeast to connect to an existing portion of the trail at the City of Circle Pines’ Baldwin Park. This segment of the trail is proposed to be 10 feet wide with a 12-foot wide pedestrian bridge at each of the two creek crossings and 10-12 foot wide, approximately 1,400 linear foot section of helical pier boardwalk to reduce environmental impacts to the wetlands in the area.

The total estimated cost to develop this segment is \$7.7 million.

#### *Segment 3 – (Figure 6)*

The next segment of the trail is existing. It continues northeast from the planned segment at Baldwin Park east to CSAH 49/Hodgson Road. It then travels south to CSAH 34/Birch Street on the west side of the road. At Birch Street, the trail leaves the trail corridor (county-owned land) and travels on the north side of CSAH 34/Birch Street east past Rice Lake Elementary School, then north through school property back into Rice Creek Chain of Lakes Park Reserve.



Due to limited space in the right of way, this section of trail can only be eight feet wide. The County has entered into a joint powers agreement for the segment along CSAH 34/Birch Street, which states the city (Lino Lakes) is responsible for maintenance and capital repairs/improvements to the trail. There is also a joint powers agreement between the County and the School District that covers the trail that traverses Rice Lake Elementary School property. Once the trail is back on County-owned parkland, the trail is paved at 10 feet wide. This portion includes about 1100 feet of boardwalk through a wetland area.

#### *Segment 4 – (Figure 7)*

The final segment of the trail continues its route north, between Rice Lake and Chomonix Golf Course to Aqua Lane. The northernmost portion of the trail runs from Aqua Lane through the park reserve to the Lino Lakes YMCA and Lino Lakes City Hall. The management boundary for this segment of trail is within County-owned parkland. This portion of the trail is 10-foot wide and paved with a pedestrian bridge over Rice Creek. This segment from Baldwin Park north was also constructed in 2011.

#### **Conflicts**

This plan does not indicate any known conflicts. It does point out a few areas where potential conflicts may be present, but it clearly states how each will be addressed, as described below.

Anoka County maintains a strong commitment to preserving and restoring natural resources within its parks, trails, and open space system. The existing natural resources within the Rice Creek North Regional Trail corridor have been examined and conflicts between the trail and the natural resources in the area have been minimized through the planning process. Some of the natural resource impacts will be mitigated using a boardwalk instead of a constructed paved trail through the wetland area. While a boardwalk may be a barrier to wildlife, the County believes the length of the boardwalk will not significantly inhibit the movement of wildlife. There are no sites of significant biological diversity adjacent to the trail, but there are a few listed threatened species within the trail corridor and park reserve boundary. Because those listed species are not near the existing trail or proposed trail, there should not be any impacts to the species.

There are several Minnesota Pollution Control Agency (MPCA) sites within 500 feet of the trail corridor that the MPCA is monitoring. All but two of the sites are along sections of the trail that currently exist and do not impact the trail. The remaining two sites are located at Golden Lake Elementary but will not impact the trail or require additional funds for remediation. There are no other known issues that will affect the trail boundary and alignment.

#### **Public Services**

There are no non-recreational related public services or facilities that need to be accommodated with the proposed trail.

Two transit options serve the trail corridor: Route 262 and 250. Route 262 provides a direct connection to the trail at the southernmost terminus of the trail at Lexington Avenue/County Road J. Route 250 stops at a park and ride lot on Elm Street in Lino Lakes and is the only other nearest transit available to the trail that must be accessed via the Bunker Hills-Chain of Lakes Regional Trail. These transit stops also provide access to East Anoka County Regional Trail. While transit access to the area is limited, the Anoka County Traveler Transit Link and Metro Mobility dial-a-ride services provide transportation for a minimal fee.

#### **Operations**

Anoka County Ordinance #2018-01, revised in July 2024, regulates the parks and trails under the jurisdiction of Anoka County. The County will continue to encourage safe and enjoyable user experiences through education, monitoring, and collaboration between the County and cities of Blaine, Circle Pines, and Lino Lakes.

Maintenance of Rice Creek North Regional Trail will help ensure a safe, clean, and usable trail. The County uses visitor fees, a parks operating budget, and supplementary funding provided



through the Regional Park Operations and Maintenance Grant Program to fund maintenance for the trail.

### ***Partner Engagement***

Anoka County connected with staff from the communities surrounding the planned segment of Rice Creek North Regional Trail, including Circle Pines and Lino Lakes, as well as the Rice Creek Watershed District, to gather feedback throughout the planning process.

The City of Circle Pines noted a desire for the trail to traverse south and east around Golden Lake Elementary School. However, through the archaeological investigations, this area was found to be part of a Pre-Contact Period Archaeological Site that at one point contained human skeletal remains. Because of these findings, the area is considered a cemetery and cannot be used for trail development. Therefore, an alternate route was selected traveling around the school by going north on School Street and on-street for a short distance along West Golden Lake Road.

The City of Lino Lakes and Rice Creek Watershed District did not provide any immediate comments or concerns. The City of Lino Lakes provided a Resolution of Support for the project.

Rice Creek Watershed District will be more involved in the actual design, engineering, and permitting portion of the project once funding for construction has been secured.

Overall, the feedback provided helped guide the routing and successful submission of the long-range plan. The communities surrounding Rice Creek North Regional Trail supports the growth of the regional trail system in Anoka County.

### ***Public Engagement and Participation***

Anoka County worked to engage with the public throughout the trail long-range planning process. The project team did this by posting and sharing information publicly on their “Plan Your Parks” website and through social media, sharing online surveys to learn more about preferences on the trail alignment and trailside amenities, and hosting community listening sessions with a mix of target audiences. As seen below, Anoka County worked to reach a diverse audience of typically underrepresented communities in the area, and the result was a mix of helpful input to drive the growth and improvement of a regional trail that will benefit everyone.

### ***Equity Analysis***

Anoka County conducted an equity analysis as part of the long-range planning process to determine which populations groups would benefit the most from the project, and to identify specific groups to prioritize engaging with throughout the planning process.

#### Project Area

Anoka County identified that of the County’s 350,000 people, most of the population is between 25 and 64 years of age, people of color make up 20% of Anoka County’s population, and people with disabilities make up 12% of the population. This information indicates that the following demographics should be targeted for engagement:

- Individuals under the age of 25
- Individuals over the age of 65
- People of color
- People with disabilities

To home in on target engagement populations close to the trail corridor, Anoka County used the Metropolitan Council’s Parks and Trails Equity Tool to better understand who would be impacted by the project. The tool revealed that the following underserved populations reside near the trail:

#### Disabilities

1. People with ambulatory disabilities (3%)
2. People with other disabilities (3-6%)

## Age

3. People under 15 years of age (17-31%)
4. People between 15-24 years of age (12-27%)
5. People over 65 years of age (8-29%)

## Ethnicity

6. Hispanic (1-3%)
7. American Indian (1-3%)
8. Asian (1-10%)
9. African American/Black (1-4%)
10. Other/multi-racial (1-12%)

The population groups noted above have historically been overlooked during the planning and construction processes for parks and trails. This practice has led to barriers that restrict access to parks and trails. Many feel unwelcome and unsafe or are unaware of the regional parks and trails system. Some may also have transportation issues and/or income barriers. Prioritizing working with these groups will help mitigate inequities and ensure that Rice Creek North Regional Trail meets the needs of all groups in the area.

### Public Engagement

To engage with the community on plans for Rice Creek North Regional Trail, Anoka County worked with surrounding neighborhood residents, seniors, parents and elementary school students, teens involved in Students for Change (A group at Centennial High School that works to promote equity and accountability in the community), and the general public.

Since part of the County's public engagement window occurred during the COVID-19 pandemic, planned engagements and events were adjusted to ensure each one was safe and socially distanced if applicable. Based on the International Association for Public Participation's Spectrum of Public Participation, the following engagement strategies were used:

1. Inform: Website and social media updates  
The County informed the public about the project by hosting a "Plan Your Parks" website that included information on current planning efforts. The County also posted regular updates about the project on its social media pages.
2. Consult: Online surveys  
Online surveys were used to gain feedback on the different proposed trail routes for the new segment. It also included an open-ended question about other amenities needed or desired along the trail.
3. Consult: Listening sessions  
These typically included meetings (virtual and in-person) with the various community groups, local governments, Independent School District 12, pop-up engagement at community events and open houses at various community locations.

Themes and responses that resulted from this engagement include:

- Amenities along the trail (teen hangout nodes, benches, tables, public art)
  - Response: Rest/observation nodes, painted murals, and a teen hammocking area have been added along the trail
- Safety (better visibility, add lights, non-emergency number, posted signs/maps, online map)
  - Response: The County plans to provide lighting at trailheads, a google map layer of each trail is available for navigation, the county has been working on multi-lingual options for the website, maps, and signs
- Effect on Natural Resources/Wildlife
  - Response: Installing a boardwalk instead of a paved trail through the wetland area
- Trail Route (the public prefers that the trail run on the land southeast of the elementary school due to the more natural feeling of the area)
  - Response: This area is off limits for development due to the archaeological findings on the land. This was communicated to stakeholders.

## Evaluation Summary

**Transparency:** During the public engagement process, the County received valuable input that has led to increased amenities proposed along the trail. While the County acknowledges that engagement with BIPOC communities and parents and students at the local elementary school was not as robust as planned due to the COVID-19 pandemic, the County believes that both communities will benefit from the proposed trail through increased access to nature and better connections in the area. Online surveys worked well to establish consensus on proposed items in the plan. These items were then taken to meetings with community groups to understand preferences in more detail.

Input received from the community supported the new one-mile trail connection to complete the full trail. Input deviated from the plan when the community suggested the use of land just southeast of the elementary school at the south end of the project. While this alignment was preferred due to the natural feeling of the area, the archaeological resources in that area prohibit development, making a short distance on-street facility the only viable option. The County believes this to be an appropriate trail alignment to avoid impacts to protected archaeological resources.

**Accountability:** The County believes that the public engagement and planning efforts undertaken have created a long-range plan that will lead to better outcomes and access for everyone. It will also improve the quality of the trail experience by providing a smoother, safer trail in a more natural setting. Connections to other regional trails in the metro system will expand access to the system.

Once approved, the long-range plan will be shared with the public and the individual groups the County has worked with. The engagement process informed the public on how the County plans its trails and communicated that everyone's input matters to the project. The County will continue to work with the community as resources become available and implementation of the improvements occurs. The intent is that by seeing the improvements as they are implemented, the public will feel a sense of ownership and see that the County listens and responds to public input.

### ***Public Awareness***

Public awareness is an important component to consider for regional park and trail systems. Anoka County provides public education efforts through the Metropolitan Council's region-wide awareness program, as well as through public information maps, websites, social media, publications, and brochures.

Through a partnership with the local cities, Anoka County Parks and Recreation Department, and the County Transportation Management Organization (TMO), Commute Solutions, a free bike/walk map was developed for the entire County. To increase the public's awareness of how easy the parks and trails system is to access, and to increase education regarding health, wellness and outdoor recreation, Anoka County installs wayfinding maps throughout the park and trails system. These signs include a map of the area showing both regional and local trails, as well as park facilities and other amenities in the area.

### ***Accessibility***

Anoka County strives to provide equal access to all residents of the County and the region. Park and trail use is open to all individuals. While there is a nominal parking fee to park and access regional trails from several locations within Anoka County regional parks, there are some parking locations that don't require a fee. Additionally, there is no fee for trail use generally. This significantly reduces economic barriers for trail users. Once built, the trail will provide a no-cost alternative transportation option to residents in the region.

The trail, and any facilities and amenities along the trail, will conform to (if not exceed) the minimum standards mandated by the Americans with Disabilities Act.



**Mississippi River Corridor Critical Area (MRCCA)**

Rice Creek North Regional Trail is not located within the Mississippi River Corridor Critical Area. The planning, design, and implementation requirements of the MRCCA will not apply to this portion of the Regional Parks and Trails System.

**Other Council Policies and Systems – Advisory Comments**

Council staff also reviewed the long range plan for consistency with other Council policies as articulated in Thrive MSP 2040, including land use, wastewater, transit, transportation, natural systems, climate change, and water. Additional advisory comments are included below.

Environmental Services – Water Resources (Roger Janzig, 651-602-1119)

There are no MCES facilities in the vicinity of the Anoka County Rice Creek North Regional Trail, one mile segment that has yet to be developed; therefore, there is no impact.

Forecasts (Todd Graham, 651-602-1322)

The LRP appears complete and consistent with policy.

The County Parks Department provides a demand forecast analysis on pp. 5-6; the analysis includes Met Council's recently approved forecast: 443,600 population in Anoka County in 2050.

Water Resources (Steve Christopher, 651-602-1033)

The draft Rice Creek North Regional Long-Range Plan connects several lakes from the Met Council's Priority Waters List (Golden and Baldwin). We commend the improvements in accessibility for these lakes that qualified for the Priority Waters List due to their Recreation and Tourism, Healthy Habitat, and Well-Rounded values. Additionally, we appreciate the identification of water resources protection and restoration efforts that are included in the Plan.

Metropolitan Transportation Services (Joe Widing, 651-602-1822)







The final alignment is pretty close to what we had on the map for the planned alignment and does not impact any RBTN alignments, as the yet to be built section of the Rice Creek North Regional Trail is not on the RBTN. It appears all other sections of the regional trail already are built out.



Figure 1. Rice Creek North Regional Trail location in the Regional Parks and Trails System



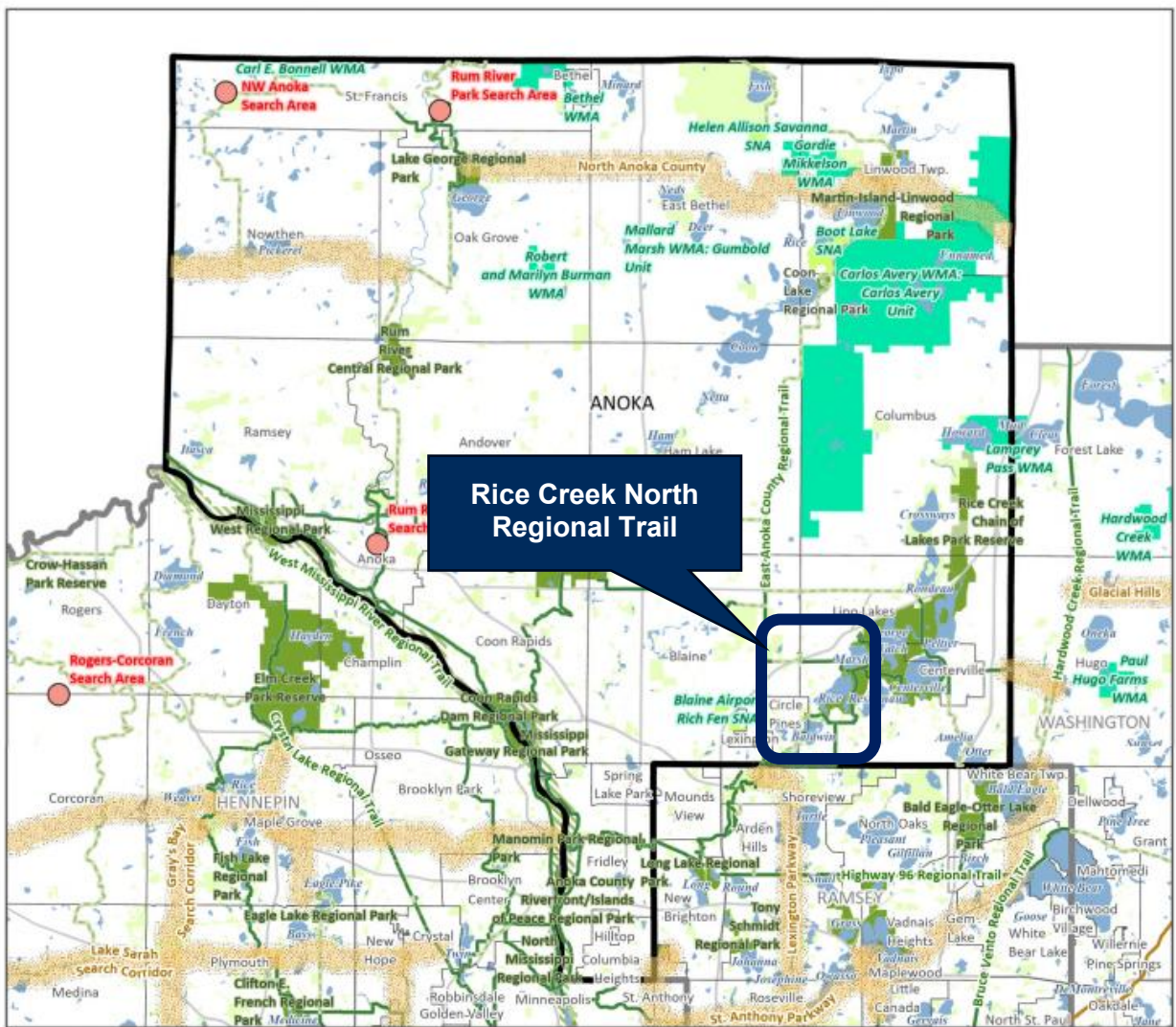
Long-Range Plan Boundary Adjustments and Search Areas

-  Boundary Adjustment
-  Park Search Area
-  Special Feature Search Area
-  Regional Trail Search Corridor
-  Regional Trail (Open to the Public)
-  Planned Regional Trail (Not Open to the Public)
-  State Trails

-  Regional Park (Open to the Public)
-  Planned Regional Park (Not Open to the Public)
-  Lower St. Croix National Scenic Riverway
-  Mississippi National River & Recreation Area
-  State Wildlife Management Areas
-  State Parks and Recreation Areas
-  MN Valley National Wildlife Refuge
-  Special State Recreation Features



Figure 2. Rice Creek North Regional Trail location in Anoka County



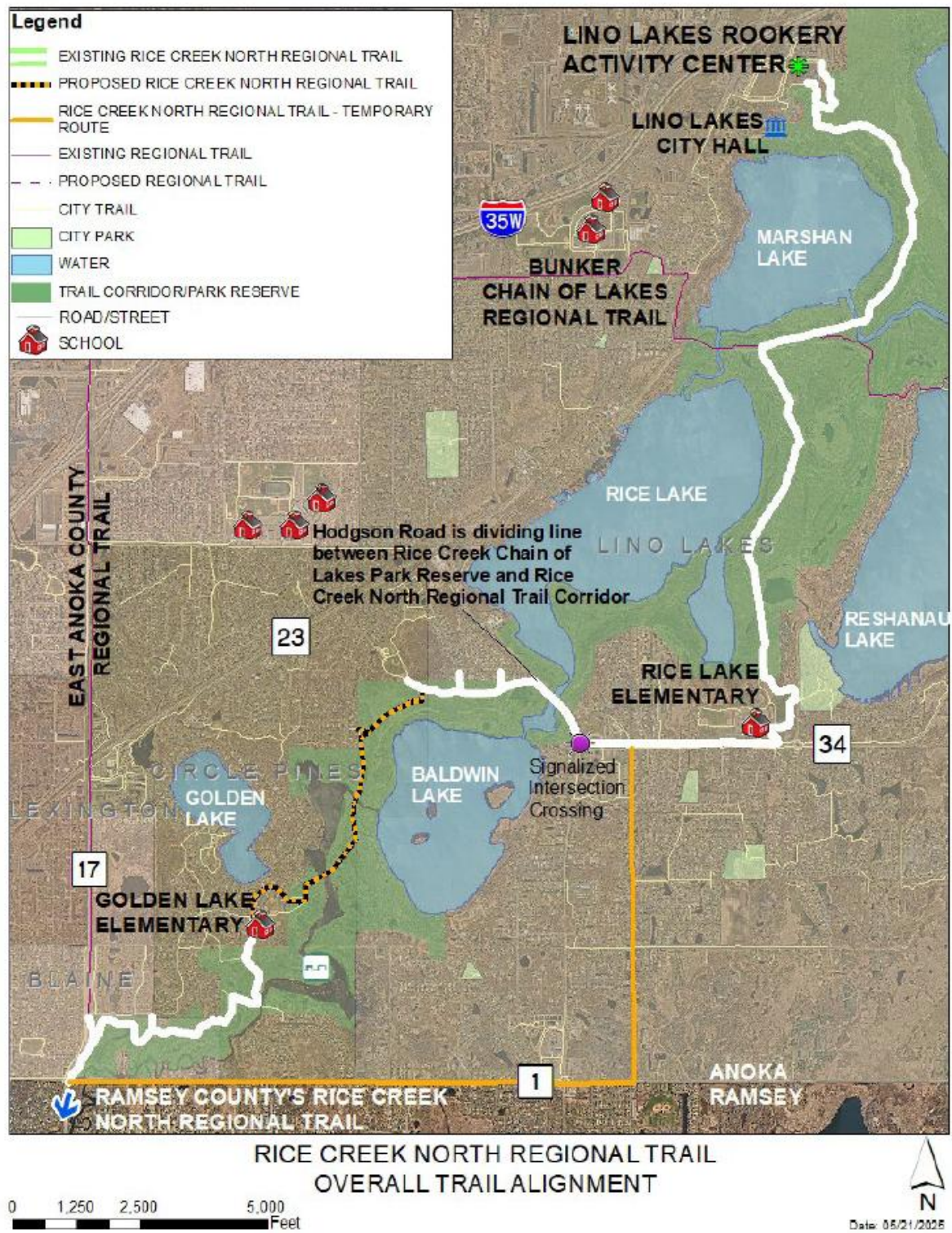
**Regional Parks and Trails Systems**

- Boundary Adjustment
- Search Area
- Special Feature Search Area
- Regional Trail Search Corridor
- Regional Trail (Open to the Public)
- Planned Regional Trail (Not Open to the Public)
- Regional Park (Open to the Public)
- Planned Regional Park (Not Open to the Public)

**Other State and National Features**

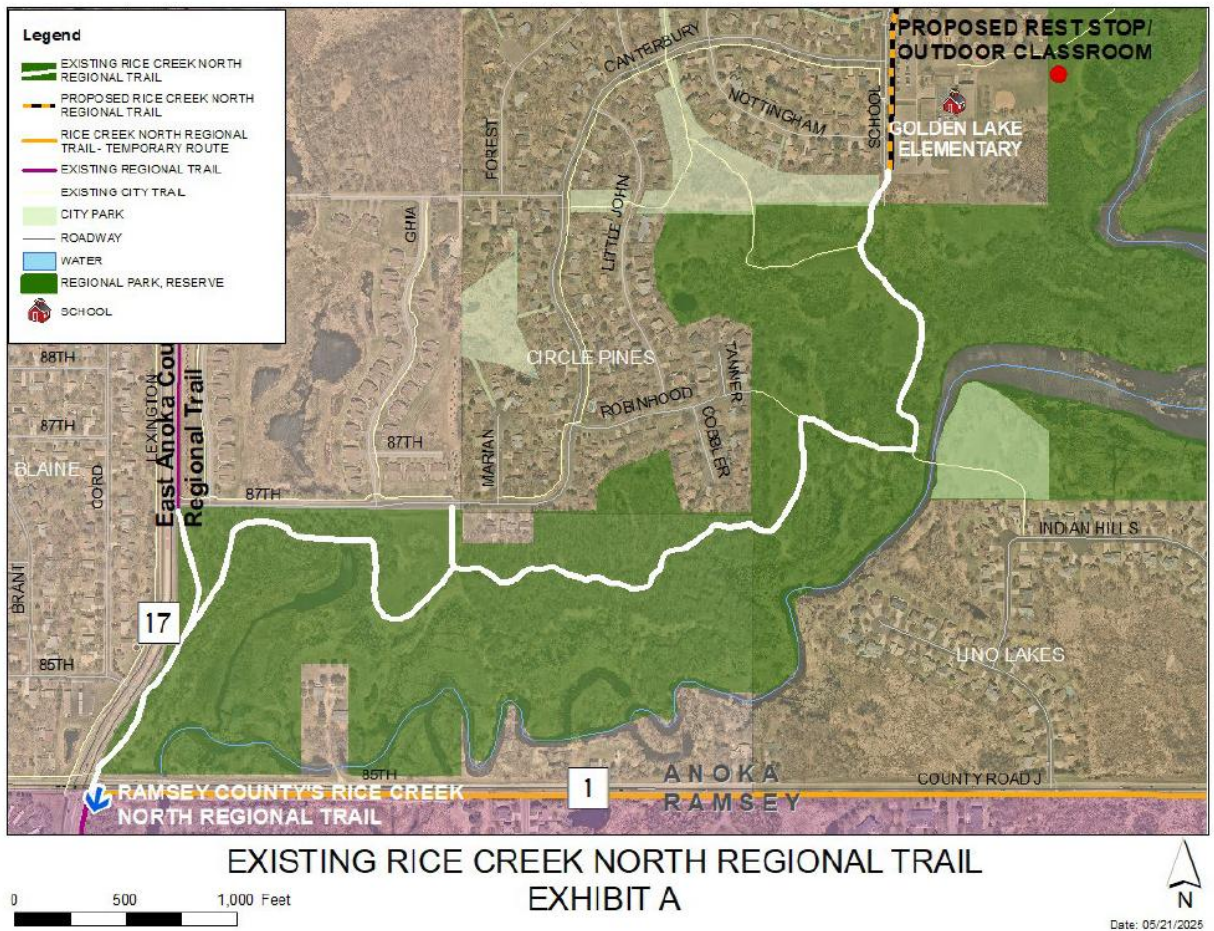
- State Trails
- State Parks and Recreation Areas
- State Wildlife Management Areas
- Scientific and Natural Areas
- Special State Recreation Features
- Other Parks, Preserves, Refuges and Natural Areas
- Lower St. Croix National Scenic Riverway
- Mississippi National River & Recreation Area
- MN Valley National Wildlife Refuge

Figure 3. Rice Creek North Regional Trail Alignment



Metropolitan Council

Figure 4. Rice Creek North Regional Trail Segment A



Metropolitan Council

Figure 5. Rice Creek North Regional Trail Segment B (Planned Segment)



Figure 6. Rice Creek North Regional Trail Segment C



Figure 7. Rice Creek North Regional Trail Segment D



EXISTING RICE CREEK NORTH REGIONAL TRAIL  
EXHIBIT D

1,000 500 0 1,000 Feet



Date: 05/06/2025



**BOARD OF COUNTY COMMISSIONERS**  
*Anoka County, Minnesota*

DATE: November 12, 2025

RESOLUTION #2025-125

OFFERED BY COMMISSIONERS: Braastad and Jeppson

**RESOLUTION RELATING TO THE APPROVAL AND ADOPTION  
OF THE RICE CREEK NORTH REGIONAL TRAIL (RCNRT)  
LONG-RANGE PLAN**

WHEREAS, Anoka County and the Metropolitan Council share common goals in providing quality natural areas for outdoor recreation; and,

WHEREAS, Anoka County has, through studies and evaluations, developed a county-wide park and trail development program which has been approved by the Metropolitan Council; and,

WHEREAS, Anoka County and the Metropolitan Council have designated a regional trail corridor through the cities of Blaine, Circle Pines, and Lino Lakes; and,

WHEREAS, the Metropolitan Council requires a contemporary long-range plan for this regional trail corridor; and,

WHEREAS, Anoka County has worked with local cities, community groups, and the public in a cooperative effort to locate and develop a regional trail corridor route through the cities; and,

WHEREAS, local city representatives have reviewed and commented on the RCNRT Long-Range Plan and provided their own resolutions of support:

NOW, THEREFORE, BE IT RESOLVED that Anoka County, by and through its Board of Commissioners, hereby adopts the RCNRT Long-Range Plan, a copy of which is on file in the Parks Department.

BE IT FURTHER RESOLVED that the Anoka County Board of Commissioners hereby authorizes submission of the RCNRT Long-Range Plan to the Metropolitan Council for its approval, so the trail facilities will be eligible for future Metropolitan Council grant funding.

BE IT FINALLY RESOLVED that a copy of this resolution and the RCNRT Long-Range Plan be forwarded to the Metropolitan Council, Anoka County Parks, and local jurisdictions.

STATE OF MINNESOTA)  
COUNTY OF ANOKA ) ss

I, Jim Dickinson, County Administrator, Anoka County, Minnesota, hereby certify that I have compared the foregoing copy of the resolution of the county board of said county with the original record thereof on file in the Administration Office, Anoka County, Minnesota, as stated in the minutes of the proceedings of said board at a meeting duly held on November 12, 2025, and that the same is a true and correct copy of said original record and of the whole thereof, and that said resolution was duly passed by said board at said meeting.

Witness my hand and seal this 12th day of November 2025.

  
JIM DICKINSON  
COUNTY ADMINISTRATOR

	YES	NO
DISTRICT #1 – HEINRICH	X	
DISTRICT #2 – BRAASTAD	X	
DISTRICT #3 – REINERT	Absent	
DISTRICT #4 – SCHULTE	Absent	
DISTRICT #5 – GAMACHE	X	
DISTRICT #6 – JEPSON	X	
DISTRICT #7 – MEISNER	Absent	

**RESOLUTION NO. 2025-07**

**STATE OF MINNESOTA  
COUNTY OF ANOKA  
CITY OF CIRCLE PINES**

**RESOLUTION SUPPORTING THE DEVELOPMENT OF THE RICE CREEK NORTH  
REGIONAL TRAIL**

**WHEREAS**, the County of Anoka is pursuing the development of a multi-purpose regional trail system that would link local and state trail systems, regional parks, and provide safe and convenient routes for non-motorized traffic to traverse the County, and

**WHEREAS**, in 2025, the Metropolitan Council adopted the 2050 Regional Parks Policy Plan, which supports the implementation of corridors that provide access to high-quality natural resources, regional parks, park reserves, and local areas of interest, and

**WHEREAS**, the Regional Trail Corridor is strategically located to provide pedestrian and bike access to the recreational and natural resources along its route, and

**WHEREAS**, parts of the Regional Trail Corridor are already constructed and established, and

**NOW THEREFORE, LET IT BE RESOLVED THAT:** The City of Circle Pines hereby offers its support to Anoka County in its efforts to cooperatively develop the Rice Creek North Regional Trail.

Adopted this 12th day of August 2025 by the City Council of the City of Circle Pines.

ATTEST:

  
\_\_\_\_\_  
Patrick Antonen, City Administrator

  
Dave Bartholomay, Mayor  
(Seal)



**CITY OF LINO LAKES  
RESOLUTION NO. 25-112**

**RESOLUTION SUPPORTING THE LONG-RANGE PLAN FOR  
THE RICE CREEK NORTH REGIONAL TRAIL**

WHEREAS, the County of Anoka is pursuing the development of a multi-purpose regional trail system that would link local and state trail systems, regional parks, and provide safe and convenient routes for non-motorized traffic to traverse the County, and

WHEREAS, in 2025, the Metropolitan Council adopted the 2050 Regional Parks Policy Plan, which supports the implementation of corridors which provide access to high quality natural resources, regional parks, park reserves and local areas of interest, and

WHEREAS, the proposed alignment of the Rice Creek North Regional Trail would link the cities of Shoreview in Ramsey County, Blaine, Circle Pines and Lino Lakes in Anoka County, and

WHEREAS, the Regional Trail Corridor is strategically located to provide pedestrian and bike access to the recreational and natural resources along its route, and

WHEREAS, parts of the Regional Trail Corridor are already constructed and established, and

WHEREAS, the Long-Range Plan for the Regional Trail addresses and establishes the entire trail corridor, but also focuses on addressing the missing link in the City of Circle Pines.

NOW, THEREFORE, be it resolved that the City of Lino Lakes, hereby offers its support to Anoka County in its efforts to cooperatively develop the Rice Creek North Regional Trail.

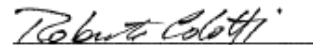
**BE IT FURTHER RESOLVED** that the Mayor and City Clerk are hereby authorized to execute such agreement on behalf of the City.

Adopted by the Lino Lakes City Council this 25<sup>th</sup> day of August, 2025.



Rob Rafferty, Mayor

ATTEST:



Roberta Colotti, City Clerk

