



Transportation Accessibility Advisory Committee

Wednesday, January 7, 2026

Today's Topics

- Project Overview
- Funding and Responsibilities
- Communications
- Q & A

Welcome & Introductions

Liz Jones | Senior Community Outreach Coordinator

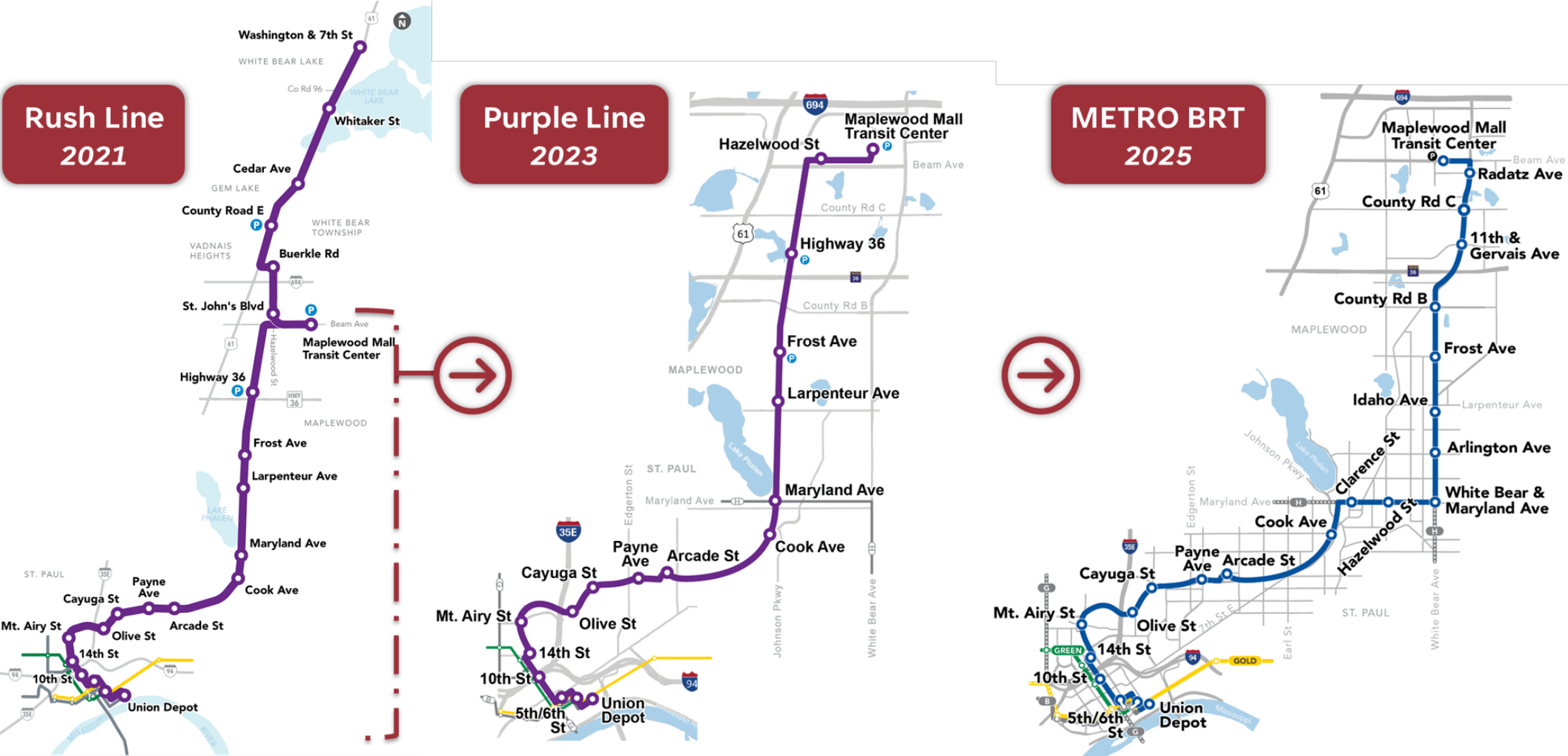


Project Overview

Craig Lamothe | Project Manager

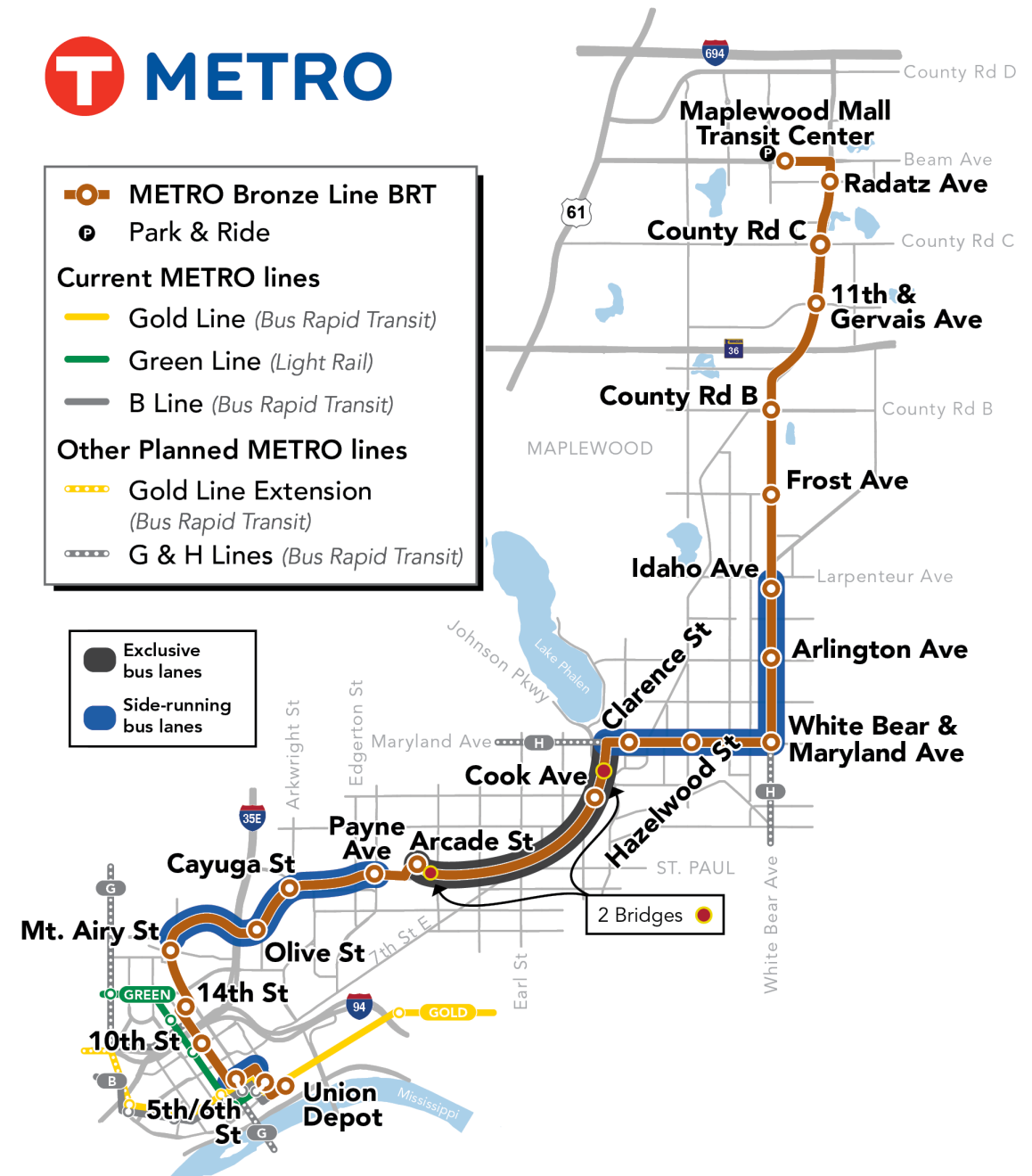


Project History



METRO Bronze Line!

- A reimagined and community-responsive version of the former Purple Line BRT project
- Will improve transit reliability and enhance safety along key corridors
- 10-mile route between St. Paul's Union Depot and the Maplewood Mall Transit Center
- 22 stations and feature 5 miles of bus lanes and two new bridges



METRO Light Rail Transit

- Blue Line
- Blue Line Extension
Project in engineering
- Green Line
- Green Line Extension
Project under construction; opens 2027

Current Station

Proposed Station

←

Station names indicated with an arrow show the direction of travel at the station.

METRO Bus Rapid Transit

- Bronze Line
Project in engineering
- Gold Line
- Gold Line Extension
Project in engineering; opens 2027
- Orange Line
- Red Line

A

A Line

B

B Line

C

C Line

D

D Line

E

E Line
Opens 2025

F

F Line
Project in engineering

G

G Line
Project in engineering

H

H Line
Project in planning; stations subject to change

Bus Rapid Transit (BRT) lines offer speed improvements of up to 25% over regular transit routes.

BRT lines named with a color operate primarily on bus-only lanes and freeways with transit advantages.

BRT lines named with a letter operate in mixed traffic with signal priority and other transit advantages like bus-only lanes.

The map illustrates the Future Rapid Transit Network as of September 2025. It features a complex web of transit lines across the city, with major water bodies like the Mississippi River and Minnesota River shown in light blue. The network includes:

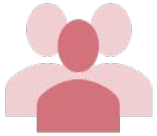
- Blue Line:** A vertical line on the left side, with a station labeled 'BLUE' at the top and 'BLUE' and 'RED' at the bottom.
- Green Line:** A line running from the top left towards the center, with a station labeled 'GREEN' at the bottom left.
- Gold Line:** A line running horizontally across the middle, with a station labeled 'GOLD' on the left and 'GOLD' on the right.
- Orange Line:** A line running vertically in the center, with a station labeled 'ORANGE' in the middle and 'ORANGE' at the bottom.
- Red Line:** A short vertical line at the bottom center, with a station labeled 'RED'.
- Bronze Line:** A line running from the top right towards the center, with a station labeled 'BRONZE' at the top right and 'BRONZE' in the middle right.

Stations are labeled with letters A through H, often with arrows indicating travel direction. For example, station 'A' has arrows pointing up and down, while station 'B' has an arrow pointing right. The map also shows various proposed and existing station locations marked with colored dots.

Future Rapid Transit Network
September 2025

7

Who is the Project serving



- 61% BIPOC



- 17% 0-car Households



- 20% Population in poverty



- 11% Population over 65



- 38% Population under 25



- 13% Population with a Disability



- 18% Population with Limited English Proficiency



12

Schools



5

Healthcare
Facilities



2

Libraries

Features of a BRT Station



BRT in Saint Paul south of Maryland Ave

- Union Depot Station to Cook Ave. Station: Preliminary Engineering Complete
 - Major design features such as platforms and bridges are set.
- Union Depot Station through 10th St. Station have been or will be completed by other BRT projects



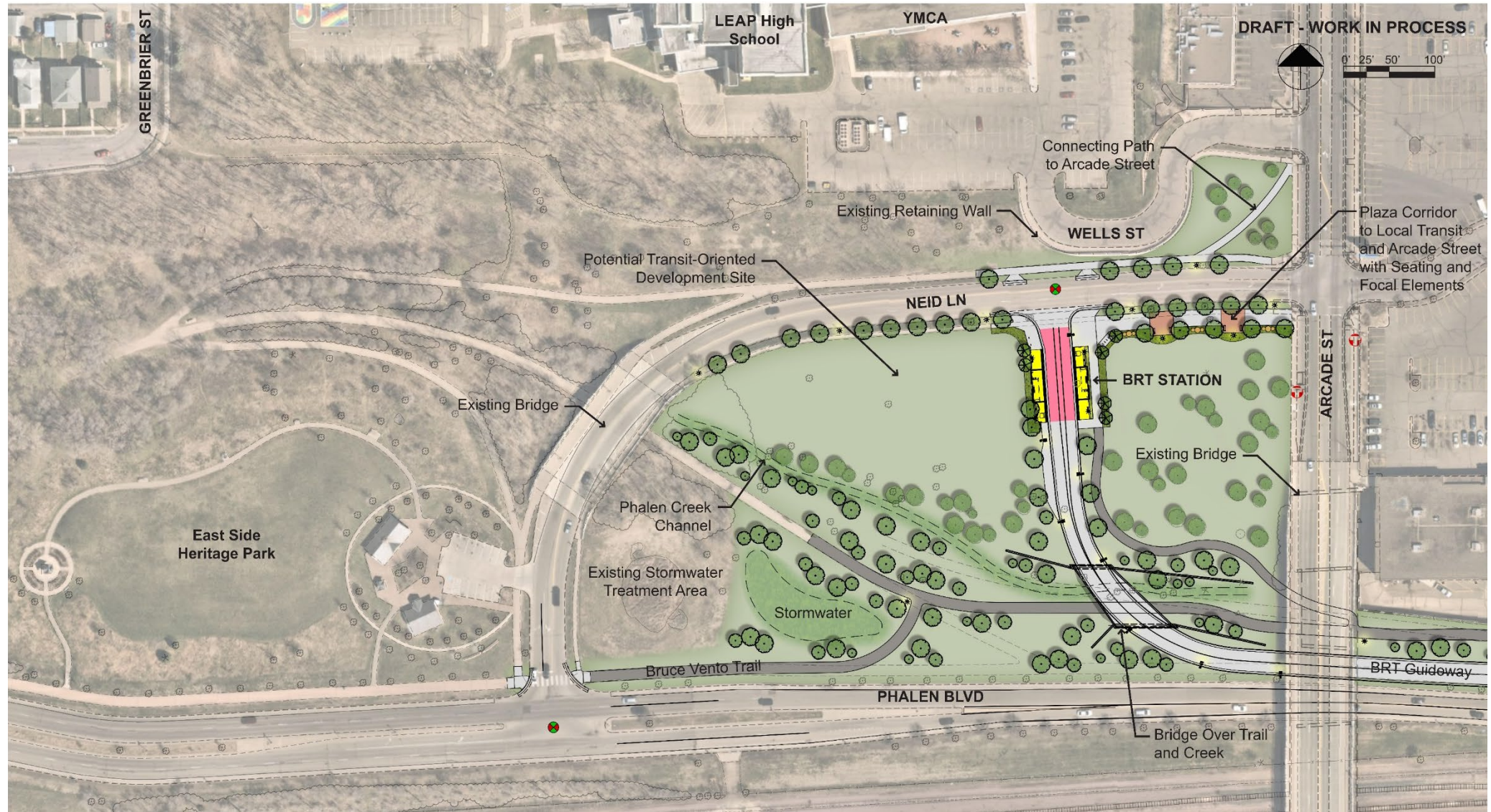
Pennsylvania Avenue

Project Area



- Currently under study by Ramsey County between I-35E and Rice Street.
- Part of the BRT alignment and will become part of the project to ensure design consistency and corridor operations.
- Includes multimodal improvements and dedicated transit lanes.
- Construction timing will align with corridor BRT delivery schedule.

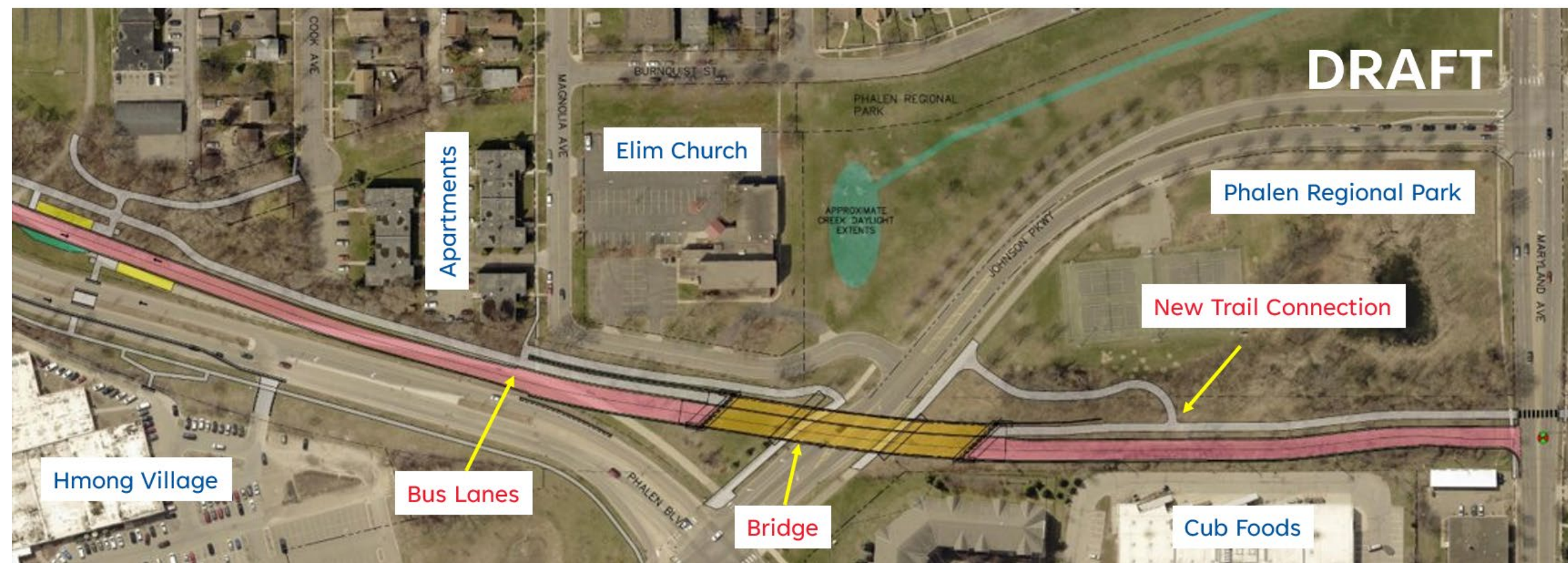
Arcade Station Location



Artist Rendering of the Arcade St Station Area



Bronze Line & Trail Bridge over Johnson Parkway



Johnson Parkway Bridge (Artist Rendering 2019)



Saint Paul on Maryland and White Bear avenues

- 5 BRT stations on Maryland and White Bear avenues
 - Clarence, Hazelwood, White Bear & Maryland, Arlington, Idaho
- Side-running bus lanes
 - General traffic to make right-turns onto local streets or into driveways
- Full roadway reconstruction



Bronze Line in Saint Paul (Maryland and White Bear)

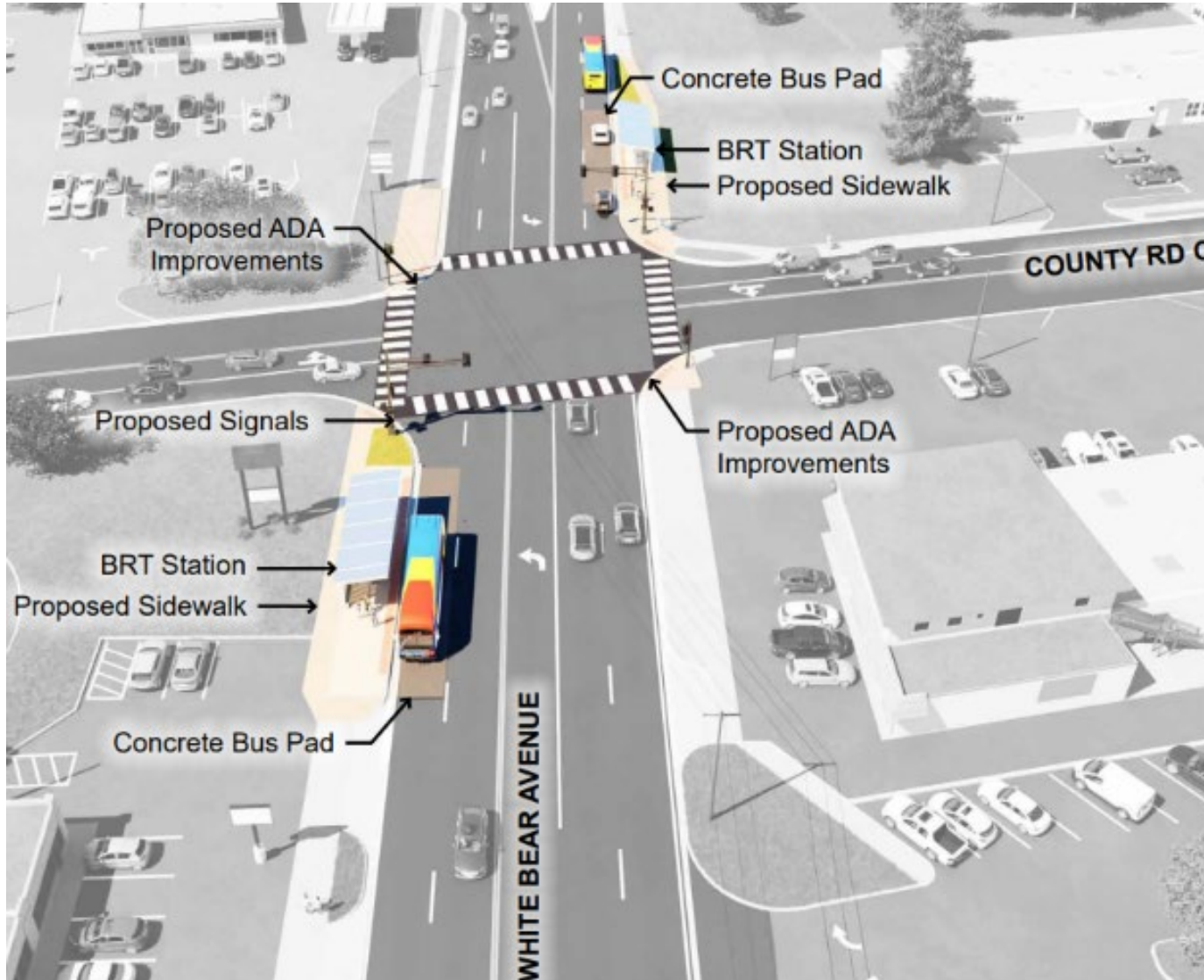


Maplewood – White Bear Ave north of Larpenteur Ave:

- 6 BRT stations
 - 5 new stations (Frost, County Rd B, 11th/Gervais, County Rd C, Radatz)
 - End-of-the-line station at the Maplewood Mall Transit Center
- Maplewood Mall Transit Center improvements
- Connection to a new [Metro micro](#) service zone (coming September 2026)
- Connection to new and improved Route 219 and 223 service (by end of 2027 through [Network Now](#)).



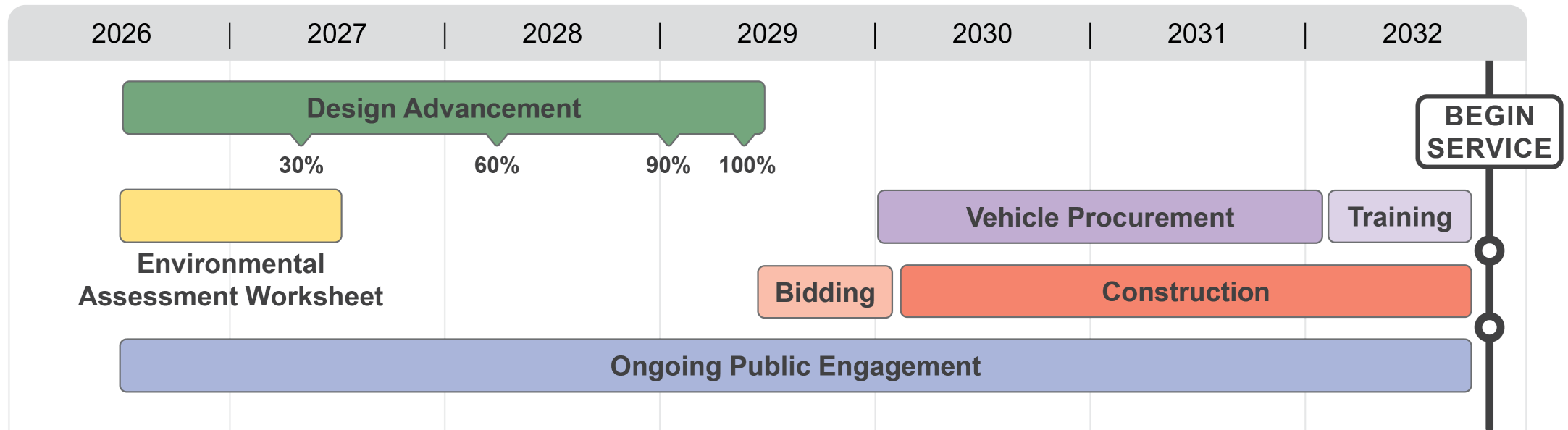
Bronze Line in Maplewood



- Limited right-of-way acquisition to accommodate station platforms
- No roadway reconstruction

Longer Term Look Ahead

- New consultant teams onboard by mid-year 2026
- Decision on bus propulsion type in 2028

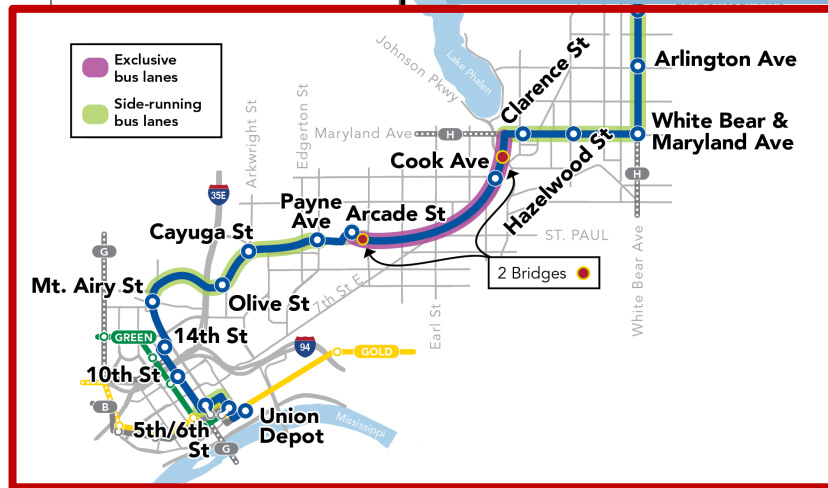
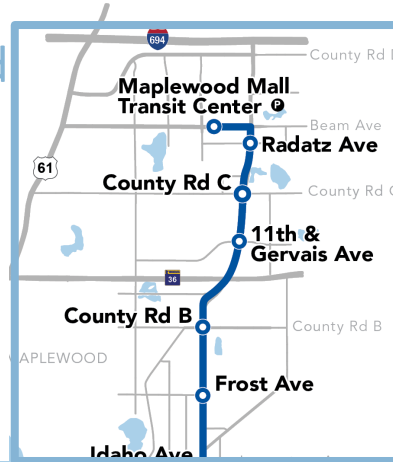


Funding and Project Delivery

Stephen Smith | Deputy Project Manager

Capital Financing Responsibility Split

Met Council Funded



Ramsey County Funded

- **Ramsey County (\$340 million):**
 - All project costs in Saint Paul
 - Labor and expense costs for Ramsey County staff
 - Some labor and expense costs for select Met Council staff
 - Cost to complete state environmental review process
 - Bus propulsion type could reduce funding commitment
- **Met Council (\$35 million):**
 - All project costs in Maplewood
 - Labor and expense costs for most Met Council staff
 - Bus propulsion type could increase funding commitment

Contracting Approach

- “Separate but Coordinated” Engineering & Design Phase
 - Council design contract:
 - All stations, intersection improvements in Maplewood, Maplewood Mall Transit Center and Union Depot improvements, two new bridges, and exclusive bus lanes.
 - County design contract:
 - Reconstruction of county roads (Pennsylvania, Maryland, White Bear) plus mill and overlay on Phalen
 - Strategic Communications, Public Outreach & Engagement, and Community Relations contract
 - Procured and managed by County; Daily work overseen by Council
- Single Construction Package
 - Council or County to issue a single construction package encompassing both design packages

Public Outreach

Liz Jones | Community Outreach & Engagement Lead



Bronze Line

METRO Bronze Line Project

December 2025

Project Overview

The METRO Bronze Line is a planned bus rapid transit line that will provide faster and more reliable transit service to the cities of Saint Paul and Maplewood and will connect with existing and future light rail and bus rapid transit services of the METRO system, including direct connections to the Green Line, Gold Line, B Line, G Line, and H Line, as well as local and express bus routes. The line will run from Union Depot in downtown Saint Paul to Maplewood Mall Transit Center, generally along Robert Street and Phalen Boulevard south of Maryland Avenue. The line will replace Route 54 along White Bear Avenue and a portion of Maryland Avenue with enhanced service and facilities. The line will increase accessibility to jobs, housing, and services, improving the appeal and competitiveness of the east metro area.

Project Schedule

The Corridor Management Committee (CMC) is anticipated to make a recommendation to advance the project during its Dec. 11 meeting. Afterward, the Metropolitan Council would seek resolutions of support from Ramsey County and the cities of Maplewood and Saint Paul.

The schedule for the project's design, construction, and opening is under development. More information about the project schedule will be shared once available. Construction is not anticipated before 2028.

2025					2026	
September	October	November	December	January	February	
Public Outreach				Resolutions of Support		

English Factsheet
(front side)

Bronze Line

MASHRUUCA KHADKA METRO BRONZE LINE

DISEEMBAR 2025

Isku dubaridka la-hawlgalayaasha mashruuca ayaa keentay qoexidda soo socota:

Gudaha Maplewood, mashruuca waxaa ka mid ah:

- Hagaajinta boosajada dhamaadka wadada ee Maplewood Mall Transit Center
- Meelo kor ka dadadan oo uu rakaabku ku sugo oo istaareex ah oo leh tas-hillaad kala duwan oo ay ku jiraan iftiiminta iyo kor u qaadista bilicda
- Wax ka beddelada munaanta calaamada taraafikada gaadidka
- Hanashada chulka dariiga oo kooban si boos loo siyo aagaga boosajada
- Hagaajinada isgoysyada boosajada, sida:
 - Taagga dadka lugaynaya iyo calaamada
 - Beddelidda suurtagalka ah ee nalalka taraafiga ee gaabooy
- Basaska waxay adeegsan doonaan seedadka ujeedooyinka guud ee waqooyiga Larperneur Avenue

Gudaha Saint Paul, mashruuca waxaa ka mid ah:

- Nakhshadda mashruuca waxaa ka mid ah BRT cusub iyo dhabbo buundo oo wayyaabo badan loo isticmaalo oo la dul saaro Johnson Parkway (inta u dhaxaysa Cook Station iyo Maryland Avenue)
- Meelo kor ka dadadan oo uu rakaabku ku sugo oo istaareex ah oo leh tas-hillaad kala duwan oo ay ku jiraan iftiiminta iyo kor u qaadista bilicda
- Basaska waxay mari doonaan seedadka gashaah ah ee wadooyinka Maryland iyo White Bear ee koonfurta Larperneur Avenue tasoos u oggolaanaysa gaadidka guud inay midig ugu leedaan wadooyinka ama dariigayada maxalliga ah
- Nonumamada kale ee Saint Paul waxaa ka mid ah:
 - Seedad u gaar ah baabuurta bidu u leeanaysa iyo meelo u dheeray wadooyinka oo cusub
 - Taagga dadka lugaynaya iyo calaamada
 - Wax ka beddelada munaanta calaamada taraafikada gaadidka
 - Hanashada chulka dariiga si ay boos u siiso dib-u-dhiska wadada iyo goobaha boosajada

White Bear Avenue iyo County Road C ee Maplewood

Maryland Avenue iyo Clarence Street ee Saint Paul

KU XIRNOW

Isqor si aad warbixinta imayl ugu hesho: metrotransit.org/bronze-line-project

Imayl naga soo dir: BronzeLine@metrotransit.org

Na soo wac: 651-402-1955

Na soo follow-garee: [MetroTransitMN](#)

If you need this information in an alternative format or language, contact:

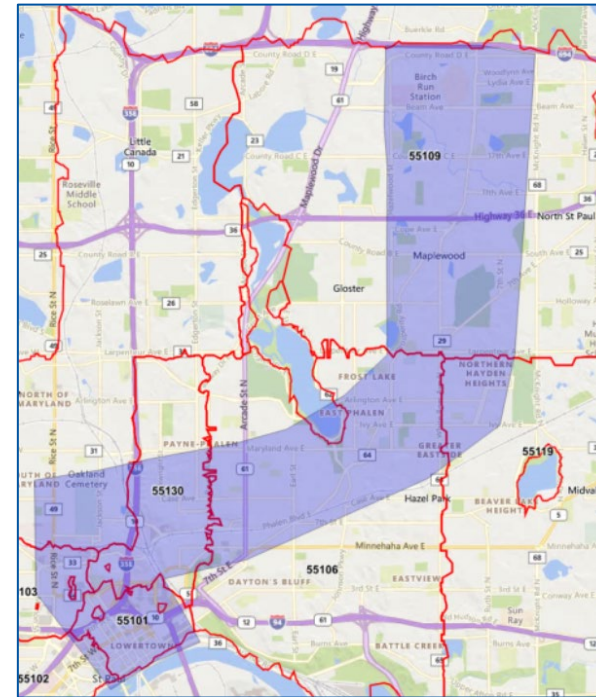
Si necasta esta información en un formato o idioma alternativo, póngase en contacto con:

Yoo koj xaw xaw cov las no wahaas las hmoob laasas xaw xaw ibi bus neeg pab bahaas cov las no rau koj, tiv tauj:

Haddi aad dooneysio in aad macluumaadkan ku hesho siyaabo kale ama afaf kale, la xiriir:

ඔබේ අවශ්‍යතාවයන්ට අනුව විකල්ප භාෂාවකින් හෝ වෙනත් ආකාරයකින් තොරතුරු ලබාගැනීමට අප සමත් වෙමු.

Somali Factsheet
(back side)



Postcard Mailer Radius

Bronze Line

COMMENT CARD

NAME: _____ PHONE: _____

E-MAIL: _____ ☐ Check the box if you would like to be contacted

COMMENTS/QUESTIONS:

Please leave this card in the comment box. Your feedback will be shared with project staff and included in the project record. Comments and questions may also be directed to BronzeLine@metrotransit.org.

Comment Card

Bronze Line

PROJECT UPDATE!

The Metropolitan Council, Ramsey County and the cities of Maplewood and Saint Paul announce the METRO Bronze Line bus rapid transit project.

metrotransit.org/bronze-line-project

Social Media

Bronze Line

METRO Bronze Line

The Metropolitan Council, Ramsey County, and the cities of Maplewood and Saint Paul are excited to announce the METRO Bronze Line, a reimagined version of the former Purple Line bus rapid transit (BRT) project.

The Bronze Line will span about 10 miles, with 22 stations, five miles of bus lanes, and two new bridges. Stations will have near-level platforms, real-time arrival info, lighting, security cameras, and seasonal shelter amenities. BRT vehicles will allow all-door boarding with off-board fare collection. It will operate in mixed traffic in Maplewood and a mix of exclusive lanes and mixed traffic in Saint Paul.

To learn more about the project, share your feedback on an interactive map, and find meeting and pop-up event details:

metrotransit.org/bronze-line-project

STAY CONNECTED!

Attend a virtual community meeting on Dec. 10 to learn more about the trajectory of the METRO Bronze Line and how it will move forward in Saint Paul and Maplewood.

VIRTUAL MEETING

Wednesday, Dec. 10 | Noon – 1:30 p.m.

Visit the website for the meeting link.

If you are interested in having Bronze Line staff come to your neighborhood groups, community organization, business, or event, please reach out.

SIGN UP FOR EMAIL UPDATES:

metrotransit.org/bronze-line-project

Email us: BronzeLine@metrotransit.org

Follow us: [@MetroTransitMN](#)

Postcard

METRO Bronze Line Bus Rapid Transit Overview

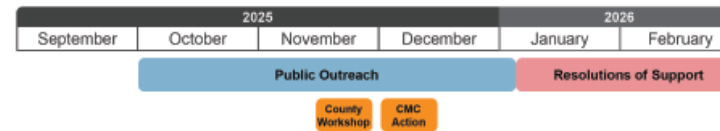


RAMSEY COUNTY

Project Schedule

The Corridor Management Committee (CMC) is anticipated to make a recommendation to advance the project during its Dec. 11 meeting. Afterward, the Metropolitan Council would seek resolutions of support from Ramsey County and the cities of Maplewood and Saint Paul.

The schedule for the project's design, construction, and opening the new project is under development. More information about the longer-term schedule will be shared once available. Construction is not anticipated before 2028.



White Bear Avenue and County Road C in Maplewood



Maryland Avenue and Clarence Street in Saint Paul

In Maplewood, the project includes:

- An improved end-of-the-line station at the Maplewood Mall Transit Center
- Comfortable shelters with a variety of amenities including lighting and landscaping enhancements
- Traffic signal transit priority modifications
- Limited right-of-way acquisition to accommodate station platforms
- Improvements at station intersections, such as:
 - » Pedestrian ramps and signals
 - » Potential replacement of older traffic lights.
- Buses will operate in general purpose lanes north of Larpeteur Avenue

In Saint Paul, the project includes:

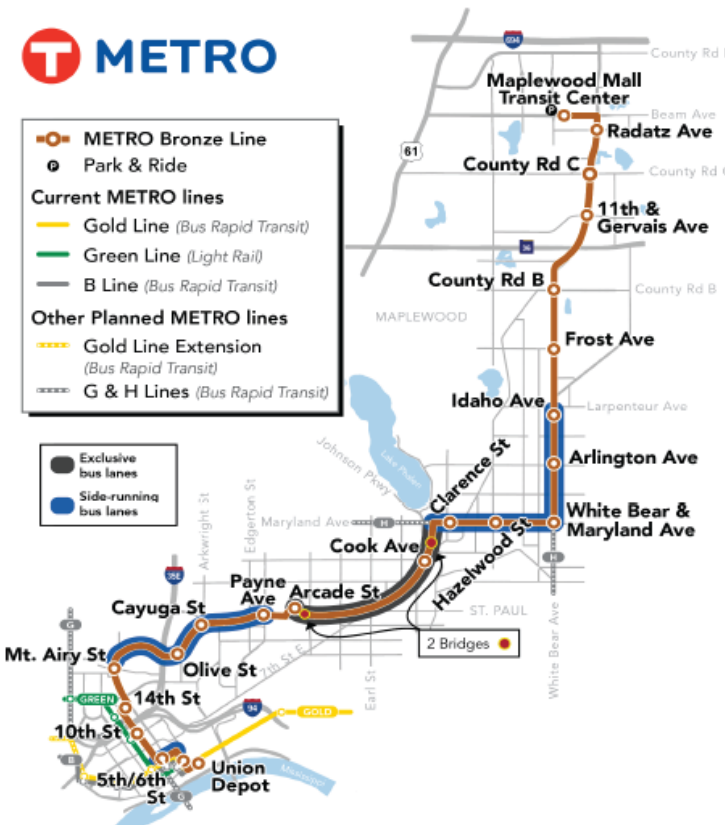
- A new BRT and multi-use trail bridge over Johnson Parkway (between Cook Station and Maryland Avenue)
- Comfortable shelters with a variety of amenities including lighting and landscaping enhancements
- Buses will operate in bus lanes along the route, including side-running bus lanes on Maryland and White Bear avenues south of Larpeteur
- Additional improvements include:
 - » Dedicated left-turn lanes and new medians
 - » Pedestrian ramps and signals
- Traffic signal transit priority modifications
- Right of way acquisition to accommodate roadway reconstruction and station platforms

For more information, visit:
metrotransit.org/bronze-line-project



- METRO Bronze Line
- Park & Ride
- Current METRO lines
 - Gold Line (Bus Rapid Transit)
 - Green Line (Light Rail)
 - B Line (Bus Rapid Transit)
- Other Planned METRO lines
 - Gold Line Extension (Bus Rapid Transit)
 - G & H Lines (Bus Rapid Transit)

- Exclusive bus lanes
- Side-running bus lanes



Stay Connected

Sign up for email updates:
metrotransit.org/bronze-line-project

Call us:
 651-602-1955

Email us:
BronzeLine@metrotransit.org

Follow us:
 @MetroTransitMN

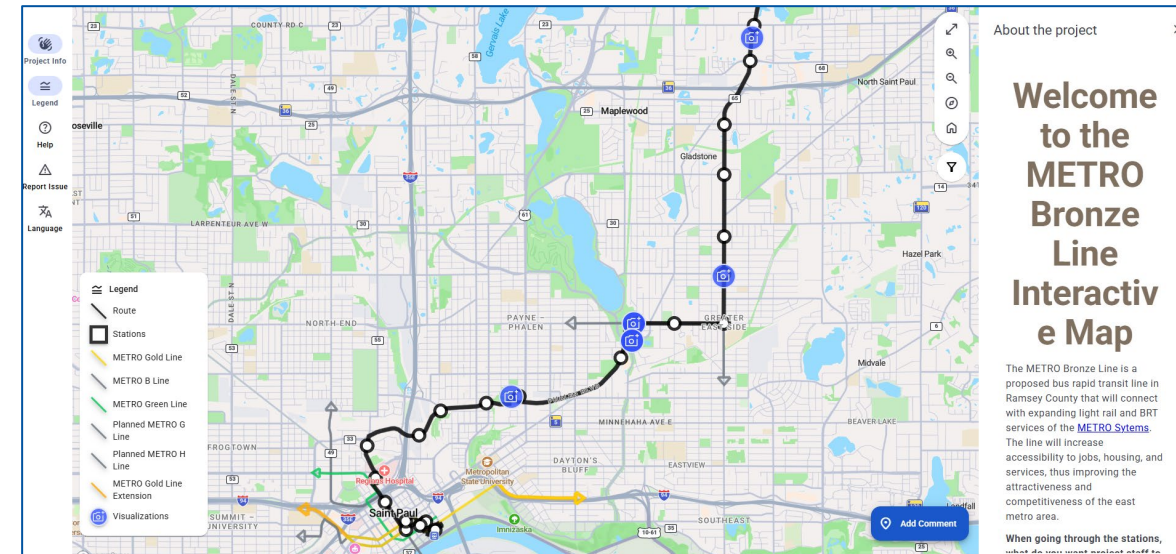


Leave a comment and/or question

- Feedback will be shared with project staff and included in the project record
- Comments and questions can be directed to the project team by email: BronzeLine@metrotransit.org
- To leave a comment/question online, visit: surveymonkey.com/r/BronzeLine
- To leave a comment on our interactive map, visit: engage.publiccoordinate.com/project/metro-bronze-line



Survey QR Code



Interactive Map & QR Code

Outreach Discussion

How would this committee like to be engaged when we get back into design?

What is the best way to collect feedback from this committee or individual committee members? Is there anything in particular you need from us to provide this feedback?

What do you find most helpful in discussing a large transit project like this? What makes presentations on the design, location and related topics of the project more understandable?

Would anyone be willing to meet outside of the TAAC meetings in a small group setting? Willing to meet in-person on the corridor?

Contact Us:

Project Senior Leadership Team

Craig Lamothe

Council's Project Manager

craig.lamothe@metrotransit.org

Morgan Abbott

Transit Engineering & Design Manager

morgan.abbott@metrotransit.org

Stephen Smith

County's Project Manager

stephen.smith@co.ramsey.mn.us

Eden Haag

Roadway Engineering & Design Manager

eden.haag@co.ramsey.mn.us

Liz Jones

Project's Communications, Outreach & Engagement, and Community Relations Manager

elizabeth.jones@metrotransit.org

Stay connected

Visit *metrotransit.org/Bronze-Line-Project* to sign-up for email updates or connect with project staff.



Sign up for email updates:
metrotransit.org/bronze-line-project



Call us:
651-602-1955



Email us:
BronzeLine@metrotransit.org



Follow us:
[@MetroTransitMN](https://twitter.com/MetroTransitMN)

For project questions or to invite us to an event, contact:

Bronze Line Project Office
BronzeLine@metrotransit.org
651-602-1955