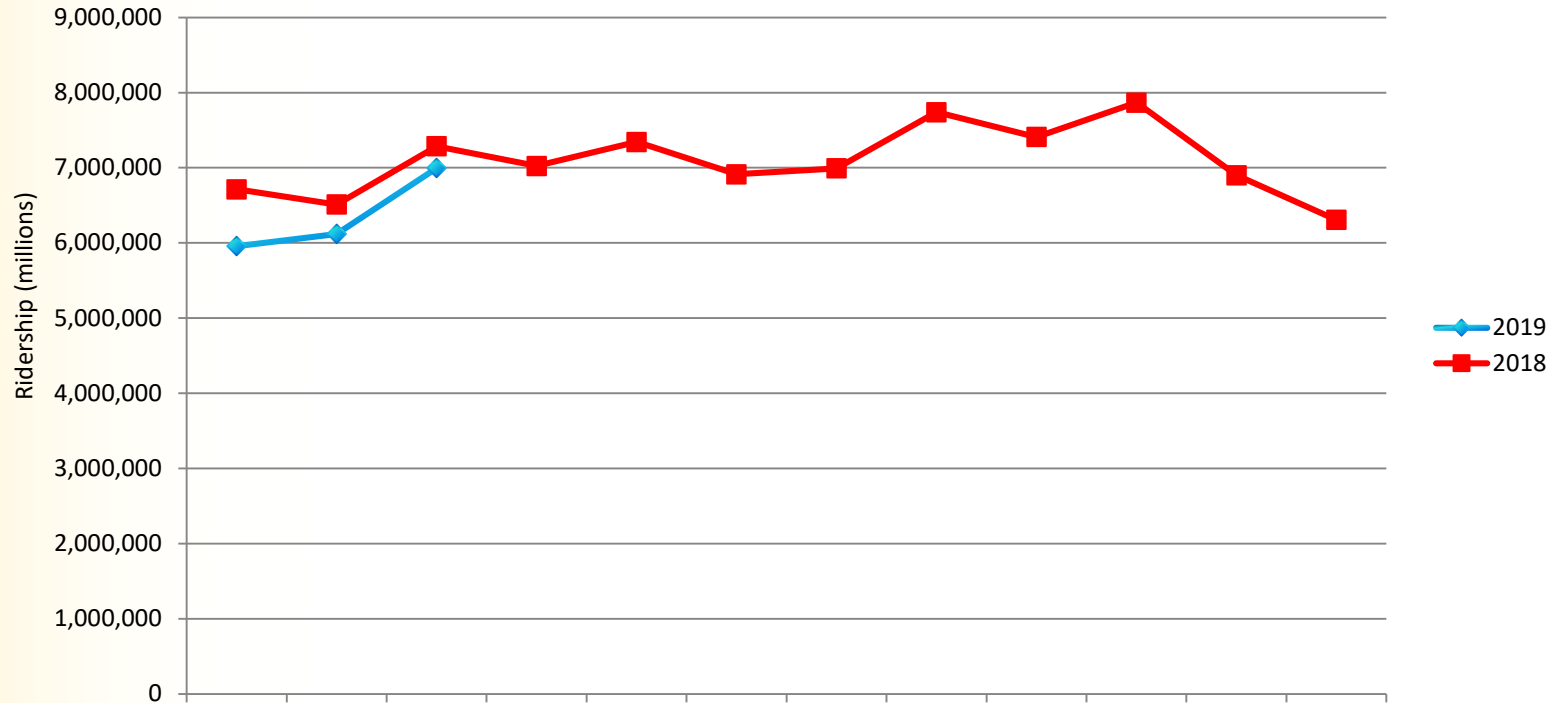


# **2019 First Quarter Metropolitan Council Ridership Report**

Transportation Committee  
June 10, 2019

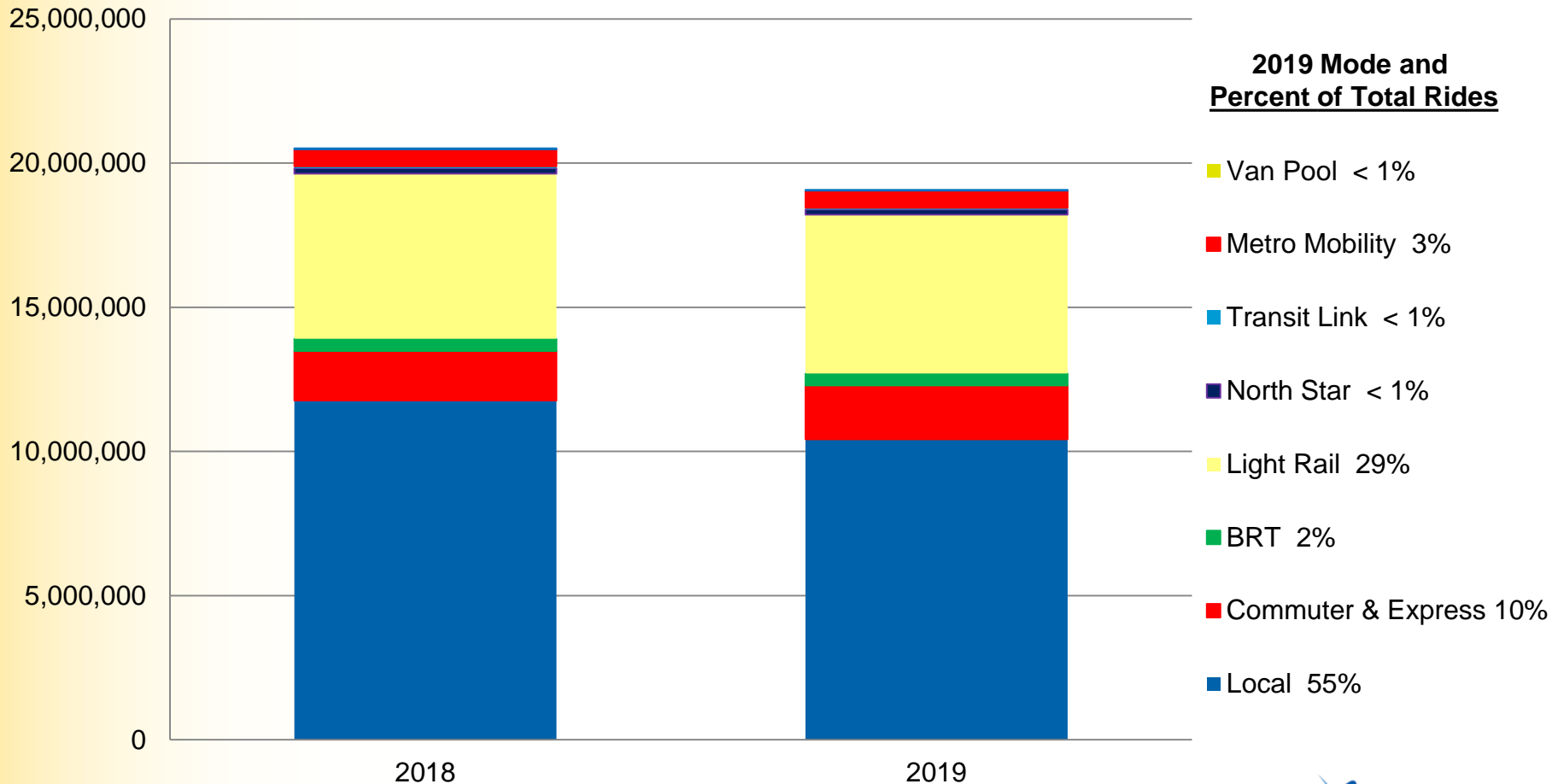
# Council Ridership – Q1 2019

YTD 2018: 20,510,067 | YTD 2019: 19,074,240 (- 7.0%)



# Council Ridership by Mode – Q1 2019

YTD 2018: 20,510,067 | YTD 2019: 19,074,240 (- 7.0%)



# Council Ridership by Mode – Q1 2019

YTD 2018: 20,510,067 | YTD 2019: 19,074,240 (- 7.0%)

Mode	2018 YTD Q1	2019 YTD Q1	Nominal Change	% Change
Local	11,452,847	10,422,329	-1,030,518	-9%
Bus Rapid Transit	434,650	411,706	-22,944	-5%
Commuter & Express	2,024,561	1,868,570	-155,991	-8%
Light Rail	5,723,249	5,512,582	-210,667	-4%
Northstar	190,607	174,694	-15,913	-8%
Metro Mobility	586,380	598,265	11,885	2%
Transit Link	65,878	59,756	-6,122	-9%
Vanpool	31,895	26,338	-5,557	-17%
<b>Council Total</b>	<b>20,510,067</b>	<b>19,074,240</b>	<b>-1,435,827</b>	<b>- 7%</b>

# Observations

- Local Bus and BRT ridership changes
  - Challenges: Bad weather days, low car travel costs, fare increase
  - Opportunities: positive ridership response to fast, frequent service
- Express Bus
  - Challenges: Bad weather days, low car travel costs, fare increase, freeway improvements
  - Opportunities: construction & congestion mitigation
- Rail modes
  - Light rail ridership continues notable growth
  - Northstar ridership down only slightly from 2017 historic high

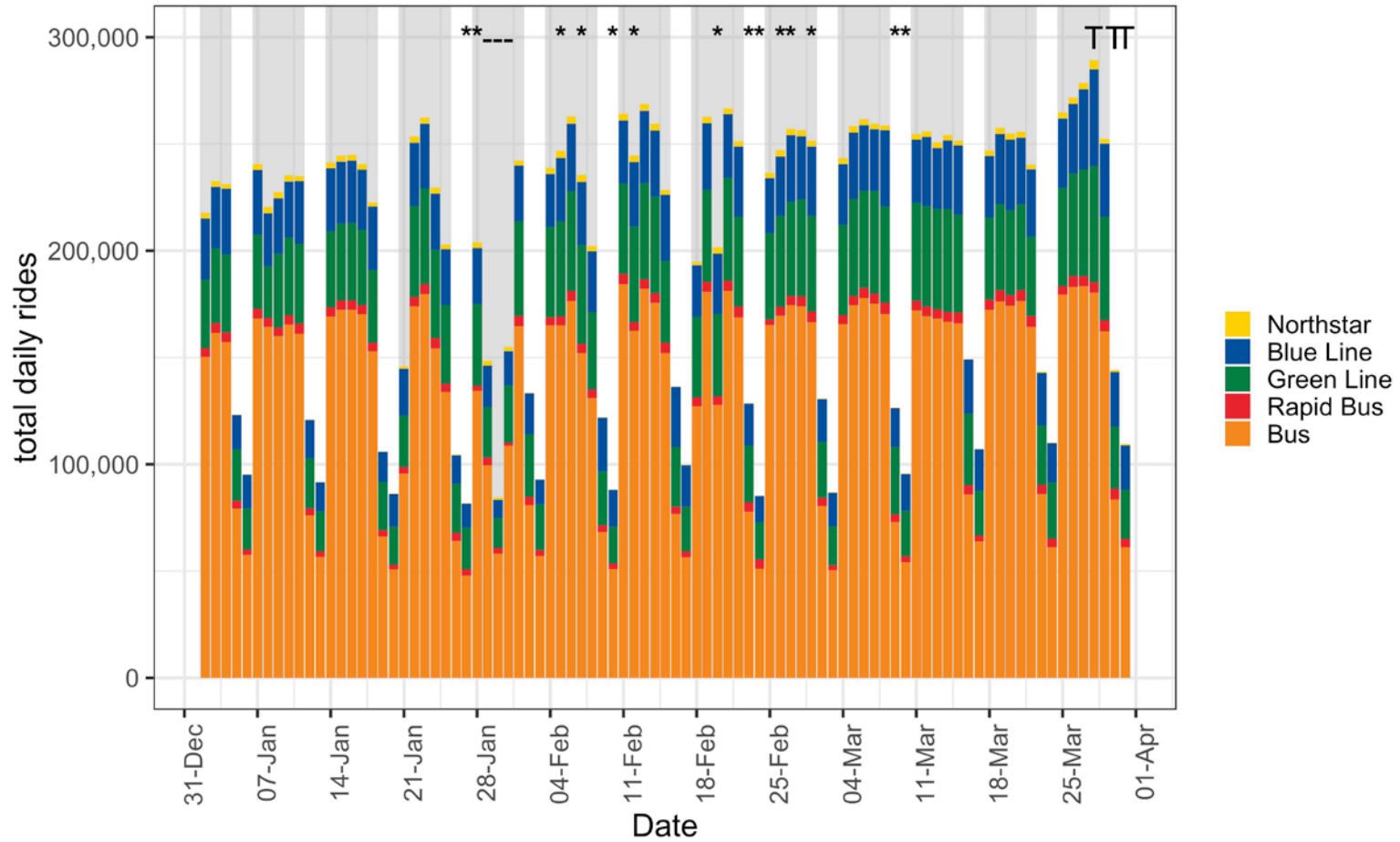
# Observations

- **Metro Mobility**
  - Average annual growth of approximately 6 percent over the past five years
  - Increase matches the area's changing demographics
- **Transit Link**
  - Decrease reflects impact of fare increase

\* 1+ inches snow

\_ polar vortex

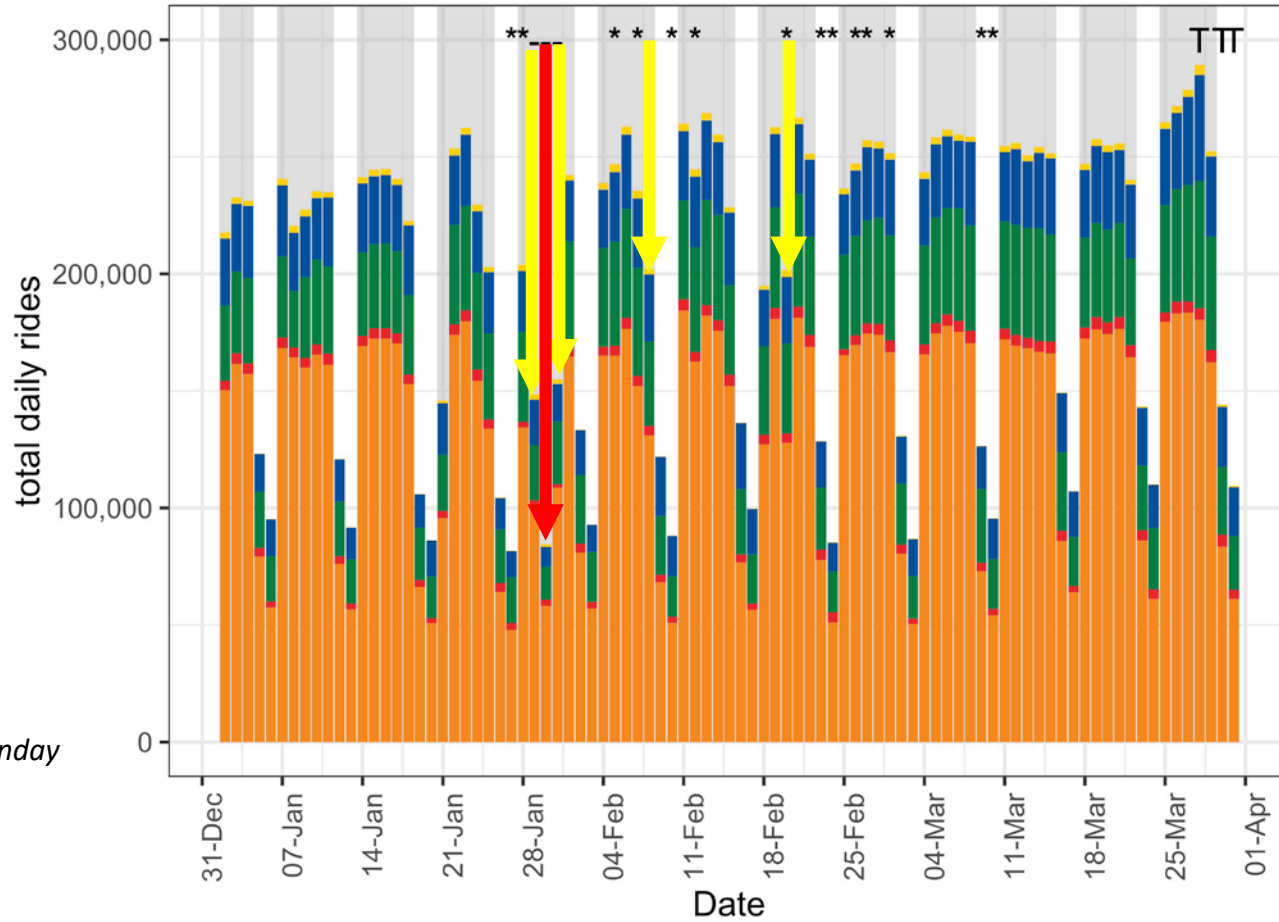
T Twins game



\* 1+ inches snow

\_ polar vortex

T Twins game



Extra holiday

Extra Sunday



# **2019 First Quarter Metropolitan Council Ridership Report**

## **Questions**